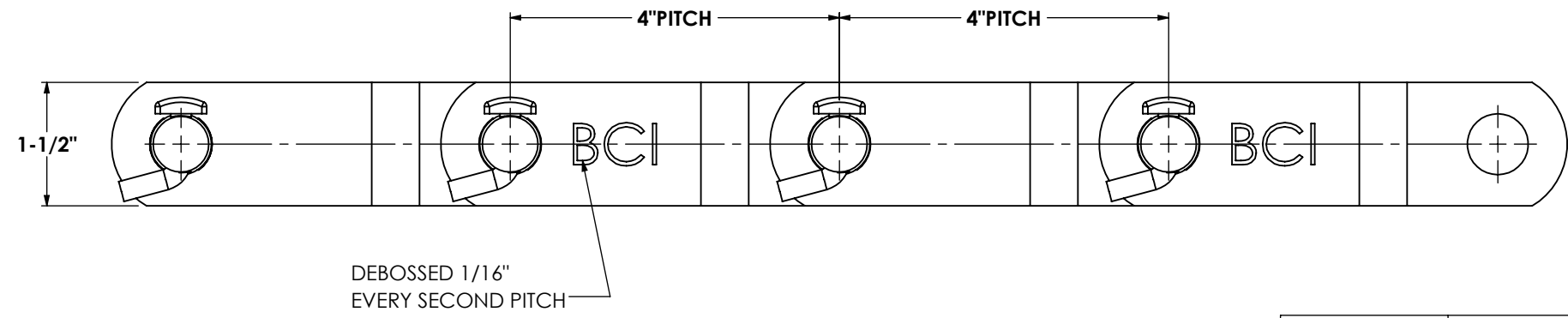
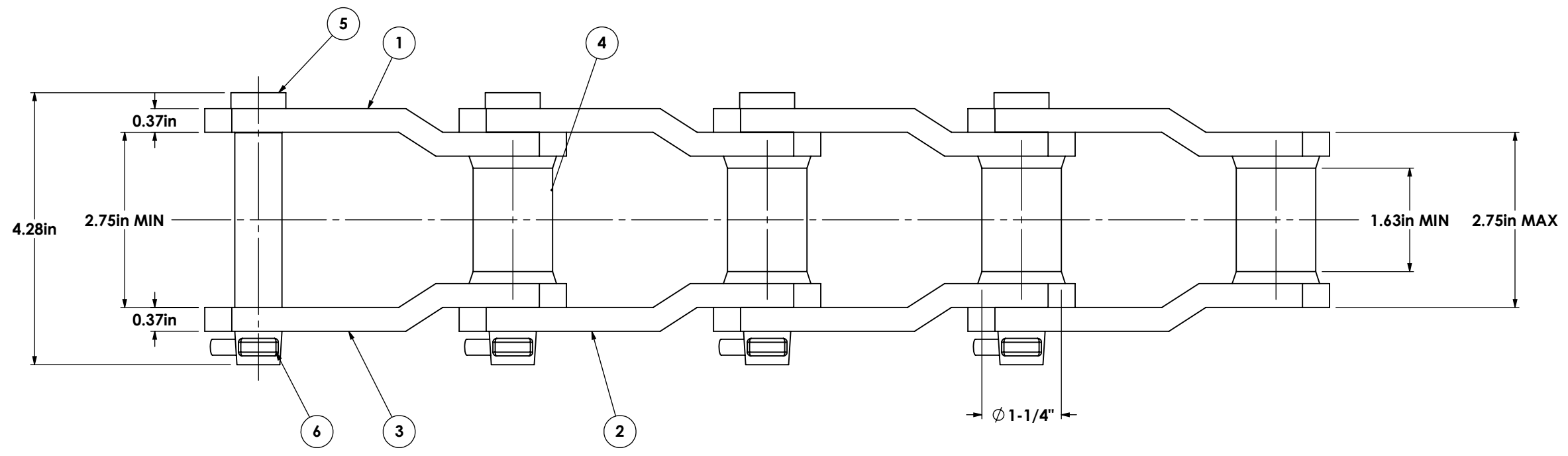


REV.	DESCRIPTION	BY	DATE
0	ISSUED FOR PRODUCTION	HS	13-Jun-2024

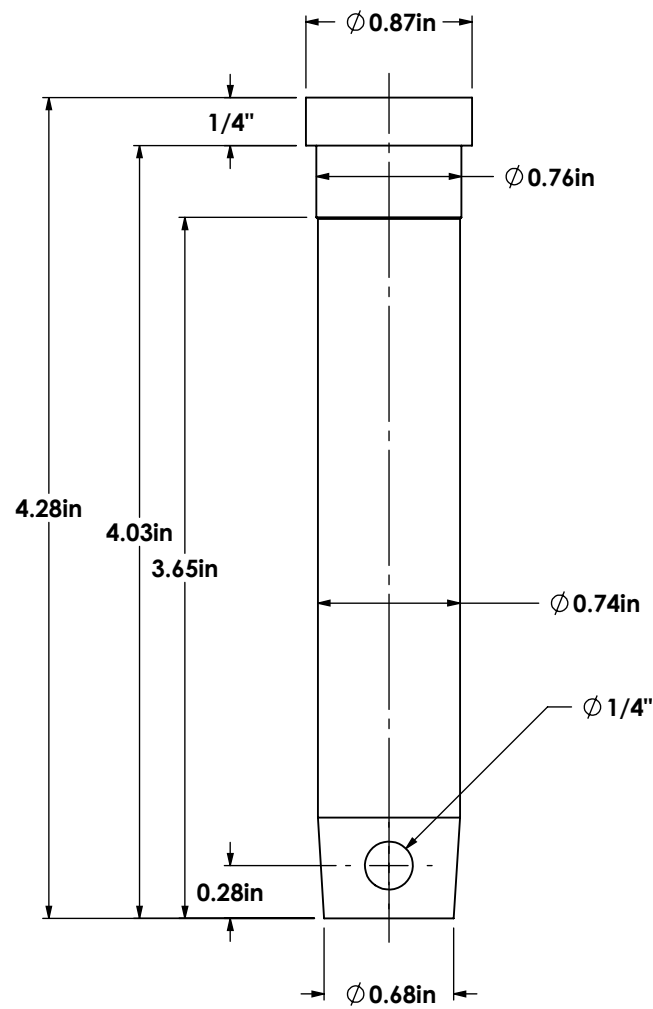


TECHNICAL REQUIREMENT:

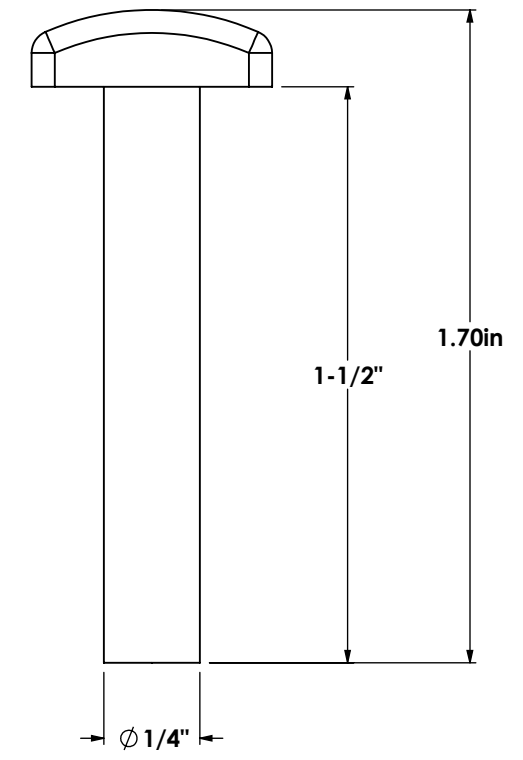
- TENSILE STRENGTH $Q_{min} = 317KN$;**
- PRIOR TO OPERATING UNDER LOAD IT IS IMPORTANT TO:**
 - BREAK IN CHAIN BY RUNNING WITHOUT LOAD CONTINUOUSLY FOR PERIOD OF 2HOURS AT SLOW SPEED.**
 - LUBRICATE CHAIN WITH OIL**

ITEM NO.	PART NUMBER	DESCRIPTION	Material	HEAT TREATMENT
1	PL-60794-001	PLATE B	SS304	TH HRC25-39
2	PL-60794-002	PLATE A	SS304	TH HRC25-39
3	PL-60794-003	PLATE A DEBOSSED	SS304	TH HRC25-39
4	MI-60794-003	BUSH	17-4	TH HRC30-40
5	20-1371	PIN	17-4PH	TH HRC42-50
6	MI-60794-005	T-HEAD COTTER PIN 1/4"	SS304	

<p>PROPRIETARY AND CONFIDENTIAL THE INFORMATION CONTAINED IN THIS DRAWING IS THE SOLE PROPERTY OF ADVANCED MATERIAL HANDLING LTD. [AMH]. ANY REPRODUCTION IN PART OR AS A WHOLE WITHOUT THE WRITTEN PERMISSION OF AMH IS PROHIBITED.</p>	UNLESS OTHERWISE SPECIFIED: DIMENSIONS ARE IN INCHES	DRAWN: TR	DATE: 2024-05-27	PROJECT:
	TOLERANCES: FRACTIONAL $\pm 1/16$ ANGULAR MACH $\pm 1^\circ$ BEND $\pm 1^\circ$ TWO PLACE DECIMAL ± 0.010 THREE PLACE DECIMAL ± 0.005	CHECKED:	NAME:	TITLE:
	SURFACE: $\sqrt{125}$	ENG APPR.:	DATE:	WS124 WELDED CHAIN
	PART NO. 20-1370	MFG APPR.:	DATE:	SIZE: B
EST. WEIGHT: 7.7LB/FT	Q.A.:	COMMENTS:	DWG. NO. CH-60794	REV. 1
NEXT ASSY:	USED ON:	APPLICATION:	SCALE: NTS	SHEET 1 OF 2



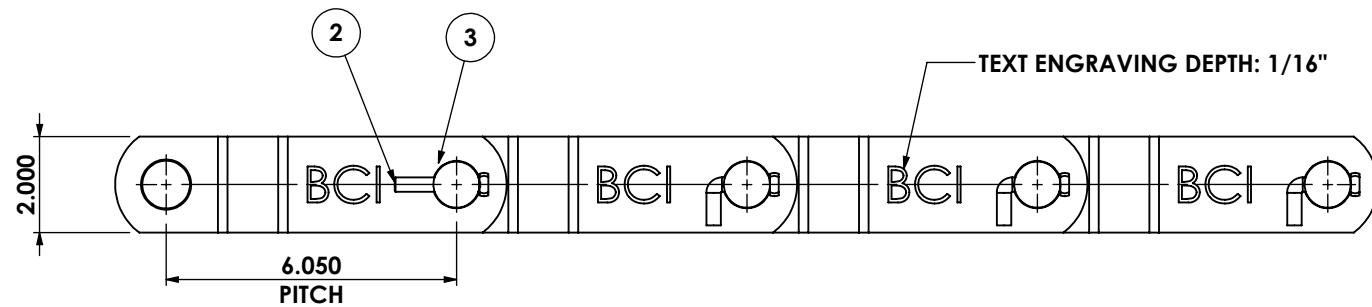
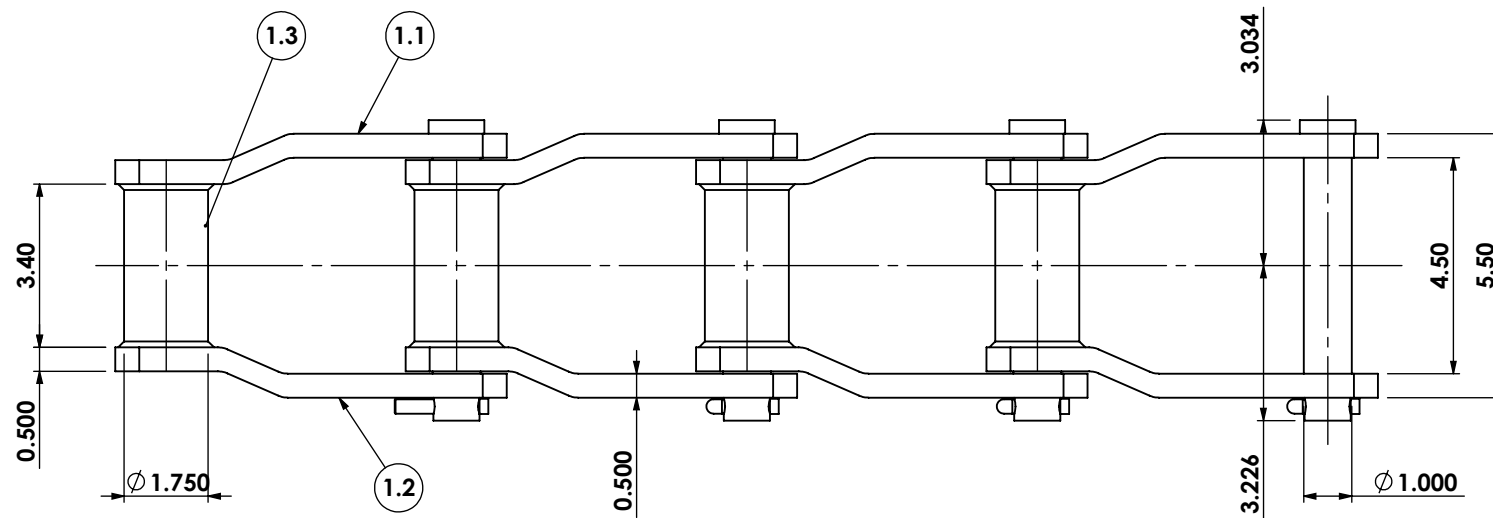
5 20-1371
PIN
SCALE: 1:1



6 MI-60794-005
T-HEAD COTTER PIN 1/4"
SCALE: 2:1

<p>PROPRIETARY AND CONFIDENTIAL THE INFORMATION CONTAINED IN THIS DRAWING IS THE SOLE PROPERTY OF ADVANCED MATERIAL HANDLING LTD. (AMH). ANY REPRODUCTION IN PART OR AS A WHOLE WITHOUT THE WRITTEN PERMISSION OF AMH IS PROHIBITED.</p>			UNLESS OTHERWISE SPECIFIED: DIMENSIONS ARE IN INCHES		NAME	DATE	PROJECT:
			TOLERANCES: FRACTIONAL ± 1/16 ANGULAR MACH ± 1° BEND ± 1° TWO PLACE DECIMAL ± 0.010 THREE PLACE DECIMAL ± 0.005		DRAWN	TR	2024-05-27
			SURFACE: $\sqrt{125}$		CHECKED		
					ENG APPR.		
					MFG APPR.		TITLE:
					Q.A.		WS124 WELDED CHAIN
					COMMENTS:		SIZE
	NEXT ASSY	USED ON	PART NO. 20-1370		B	DWG. NO. CH-60794	REV 1
	APPLICATION		EST. WEIGHT: 7.7LB/FT		SCALE: NTS	SHEET 2 OF 2	

ITEM NO.	PART ID	AMH Part Number	DESCRIPTION	MATERIAL	HEAT TREATMENT	Weight	Make Or Buy	QTY.
1	CH21147-01	20-1463	WH132IBR CHAIN	-		-	STOCK	4
1.1	CH21147-01.1		SIDE BAR	5140	HRC 25-39	-	STOCK	1
1.2	CH21147-01.2		SIDE BAR	5140	HRC 25-39	-	STOCK	1
1.3	CH21147-01.3		BARREL	5140	HRC 30-40	-	STOCK	1
2	MI21147-02		T PIN 0.3"X1.77"	Q235		0.05	BUY	4
3	PIN21147-03	20-0562	WH132 PIN	40Cr	HRC 42-50	1.39	BUY	4



NOTE:
MIN. TENSILE STRENGTH 378.1KN

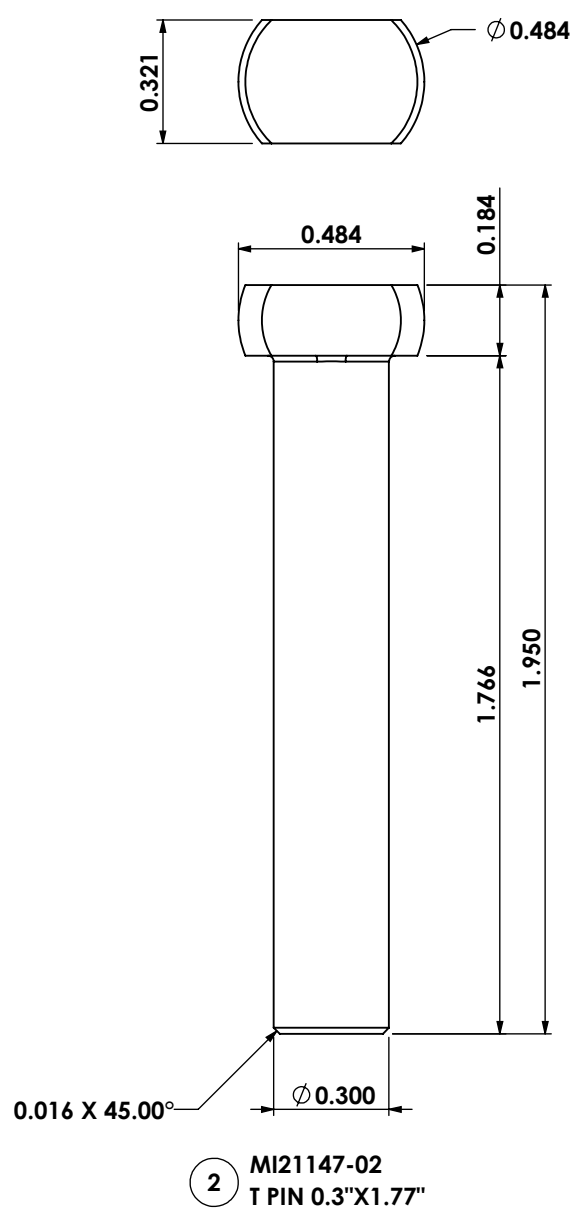
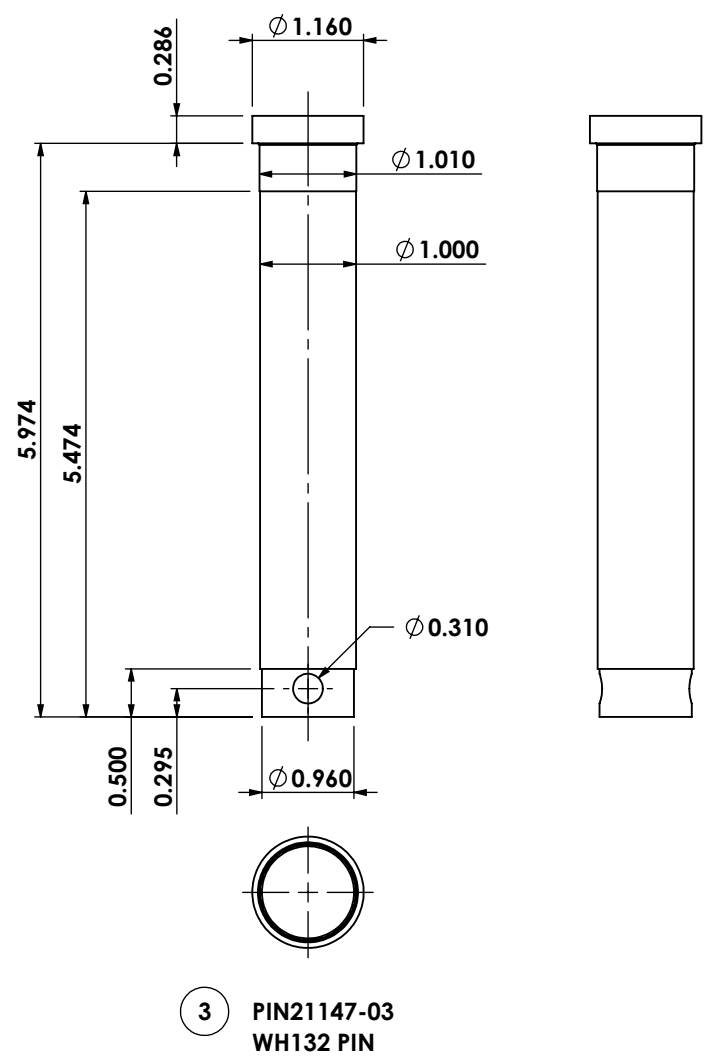
REVISIONS				
ZONE	REV.	DESCRIPTION	BY	DATE
	A	ISSUED FOR INTERNAL REVIEW	TR	2025-03-18
	B	ISSUED FOR APPROVAL	TR	2025-03-19

<p>PROPRIETARY AND CONFIDENTIAL THE INFORMATION CONTAINED IN THIS DRAWING IS THE SOLE PROPERTY OF ADVANCED MATERIAL HANDLING LTD. [AMH]. ANY REPRODUCTION IN PART OR AS A WHOLE WITHOUT THE WRITTEN PERMISSION OF AMH IS PROHIBITED.</p>	UNLESS OTHERWISE SPECIFIED:		NAME	DATE	TITLE: WH132 (BCI) FULLY HEAT TREATED COTTERED CONSTRUCTION PART NO#: 20-1463 DWG. NO. CH21147 SCALE: NTS SHEET 1 OF 2	
	DIMENSIONS ARE IN INCHES		DRAWN	TR		03/18/2025
	TOLERANCES: FRACTIONAL ± 1/16 ANGULAR MACH ±1° BEND ±1° TWO PLACE DECIMAL ±0.010 THREE PLACE DECIMAL ±0.005 FN1= 0.0019-0.003 (MAX INTERFERENCE) FN2= 0.002-0.0045 (MAX INTERFERENCE) FN3= 0.0034- 0.006 (MAX INTERFERENCE) FN4 = 0.005-0.008 (MAX INTERFERENCE)		CHECKED			
	MATERIAL :		ENG APPR.			
EST. WEIGHT: 13.92LB/FT		MFG APPR.			QTY.	
		Q.A.			REV	
		COMMENTS:			B	

8 7 6 5 4 3 2 1

F
E
D
C
B
A

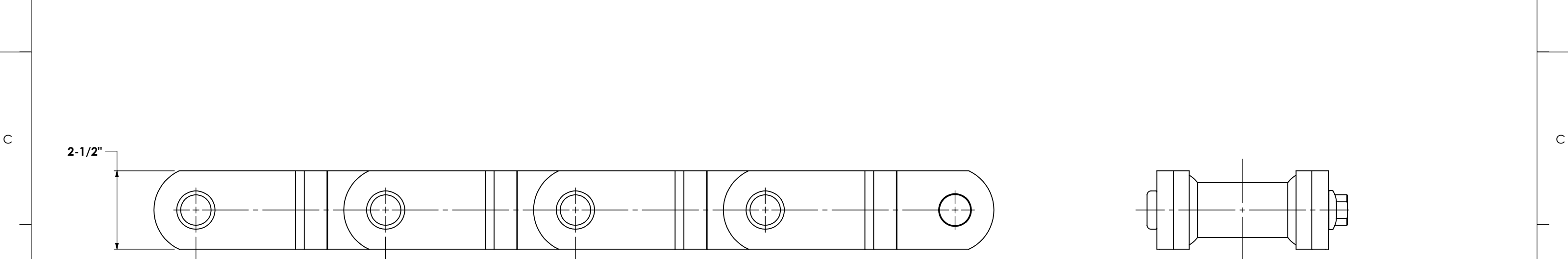
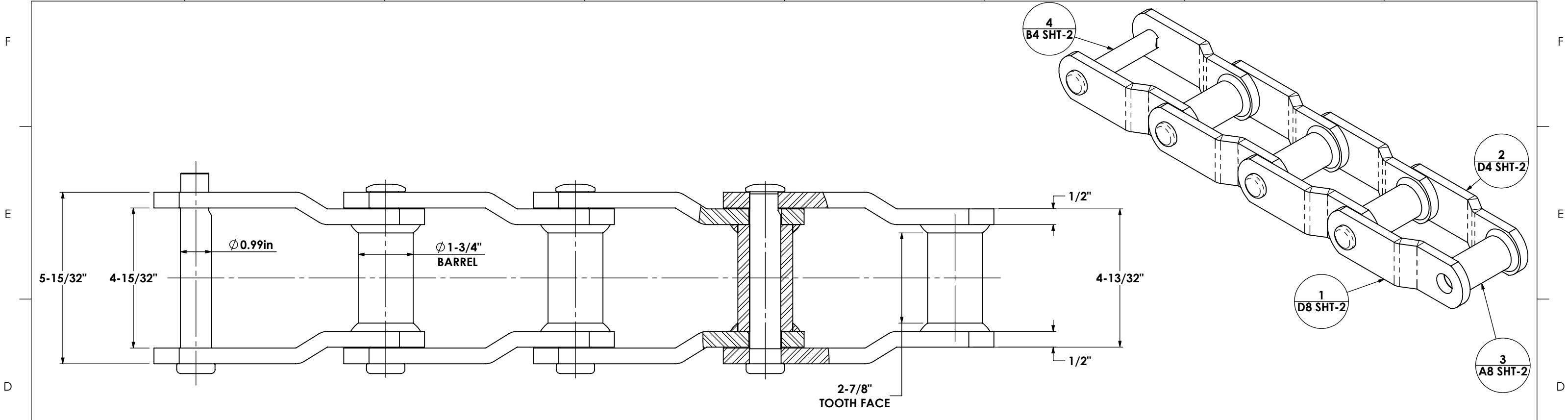
F
E
D
C
B
A



<p>PROPRIETARY AND CONFIDENTIAL THE INFORMATION CONTAINED IN THIS DRAWING IS THE SOLE PROPERTY OF ADVANCED MATERIAL HANDLING LTD. (AMH). ANY REPRODUCTION IN PART OR AS A WHOLE WITHOUT THE WRITTEN PERMISSION OF AMH IS PROHIBITED.</p>			UNLESS OTHERWISE SPECIFIED: DIMENSIONS ARE IN INCHES		NAME	DATE	PROJECT:
			TOLERANCES: FRACTIONAL ± 1/16 ANGULAR MACH ± 1° BEND ± 1° TWO PLACE DECIMAL ± 0.010 THREE PLACE DECIMAL ± 0.005		DRAWN	TR	03/18/2025
			SURFACE: $\sqrt{125}$		CHECKED		
					ENG APPR.		
					MFG APPR.		TITLE: WH132 (BCI) FULLY HEAT TREATED COTTERED CONSTRUCTION
					Q.A.		SIZE DWG. NO. REV
	NEXT ASSY	USED ON	PART NO.		SCALE: NTS SHEET 2 OF 2		
	APPLICATION		EST. WEIGHT: 13.92LB/FT				

8 7 6 5 4 3 2 1

8 7 6 5 4 3 2 1



NOTE:
 • MATERIAL 40Cr USA EQUIVALENT IS 5140.

ITEM NO.	PART NUMBER	DESCRIPTION	MATERIAL
1	PLT-3946-001	ROUND HOLE SIDEBAR	40Cr
2	PLT-3946-002	FLAT HOLE SIDEBAR	40Cr
3	BSH-3946-001	CHAIN BUSHING	40Cr
4	20-0404	WH150IBR CHAIN PIN	5140

ITEM DESCRIPTION	MATERIAL	HARDNESS
BUSHING	40Cr	Core 30-40 HRC; Surface 50-62 HRC
SIDE BARS	40Cr	26-39 HRC
RIVET PIN	40Cr	Core 40-45 HRC; Induction Depth 0.071"-0.138"; Surface 55-62 HRC
CONNECTING PIN	40Cr	Core 40-45 HRC; Induction Depth 0.071"-0.138"; Surface 55-62 HRC

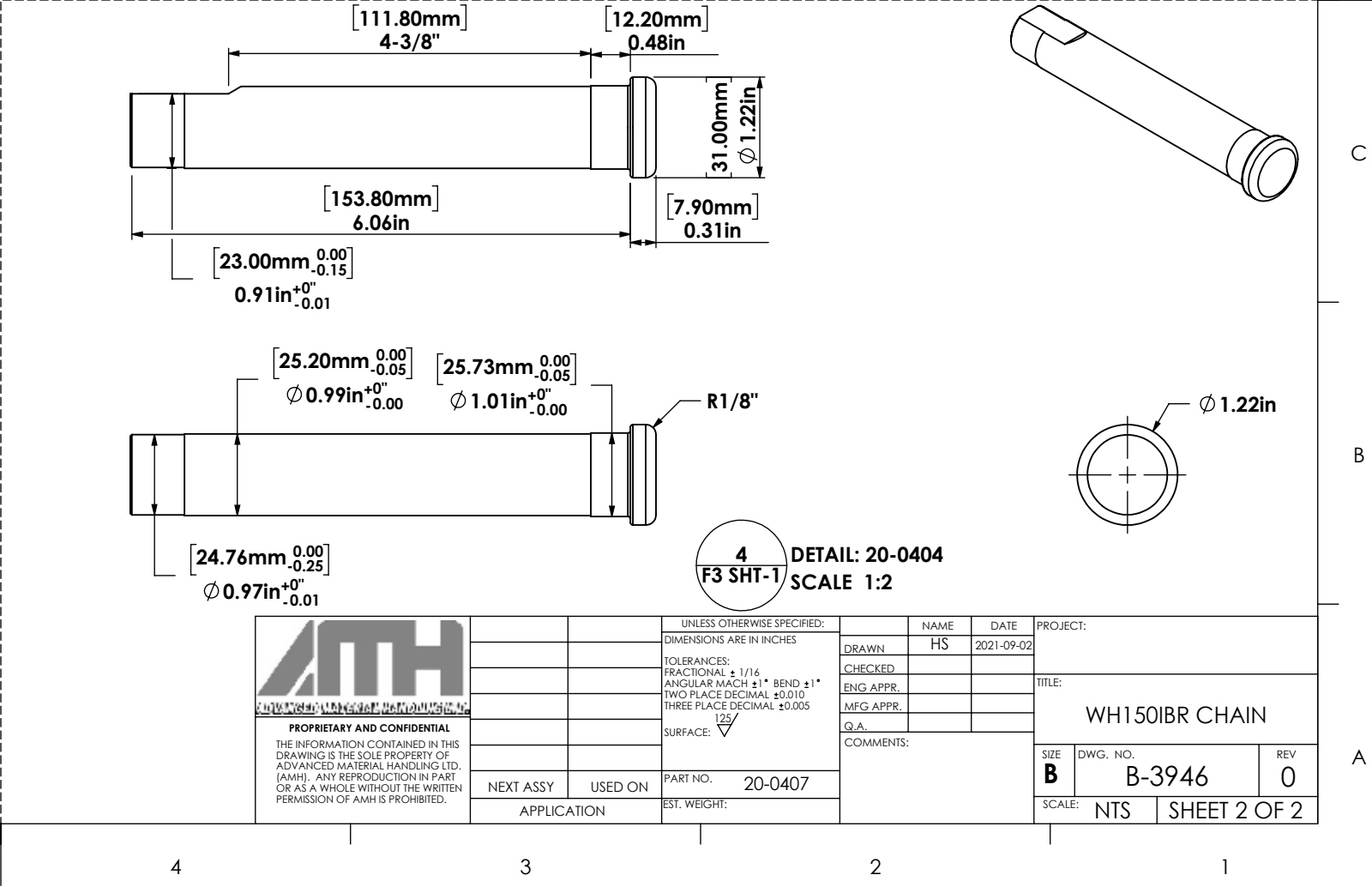
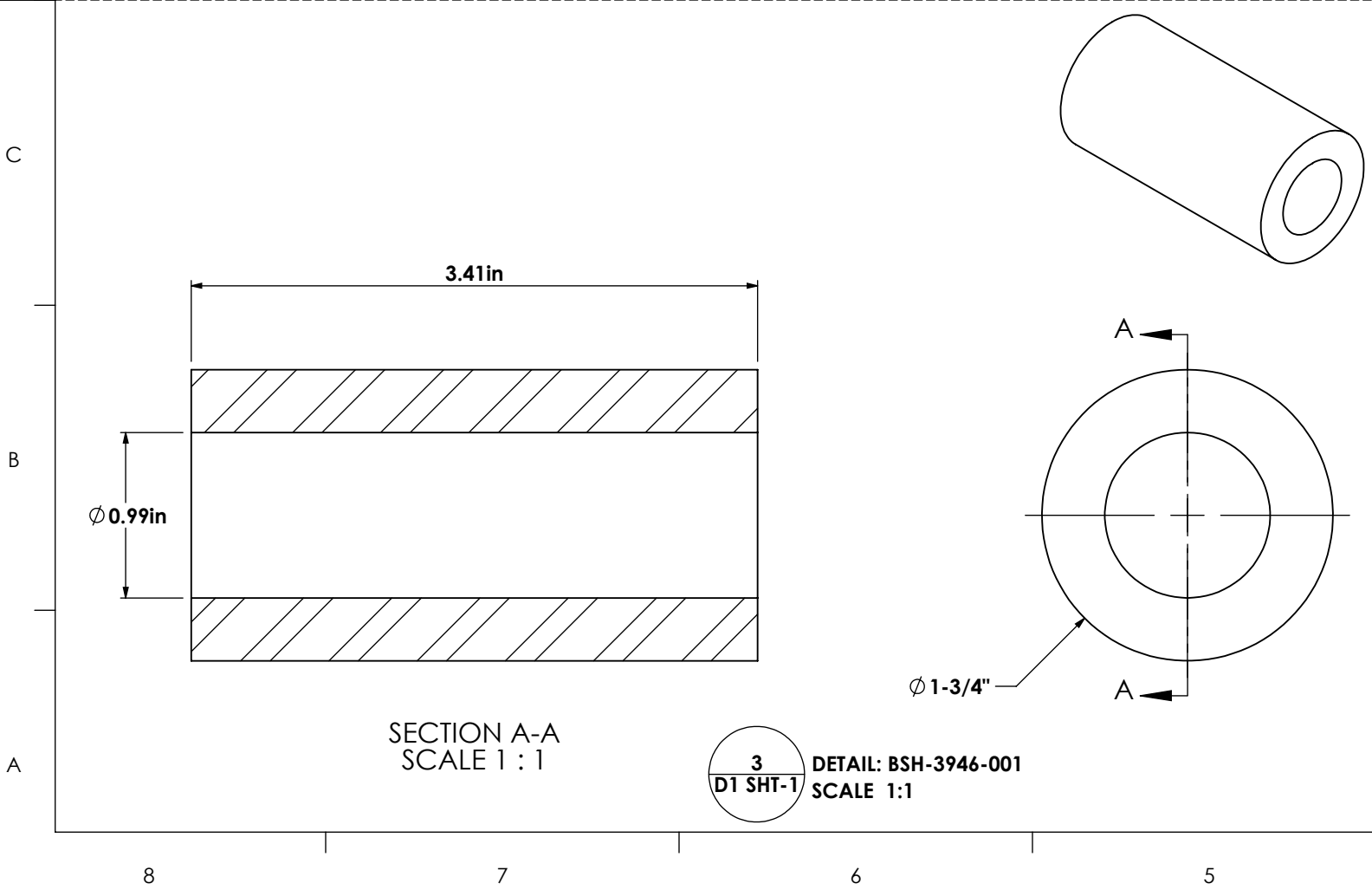
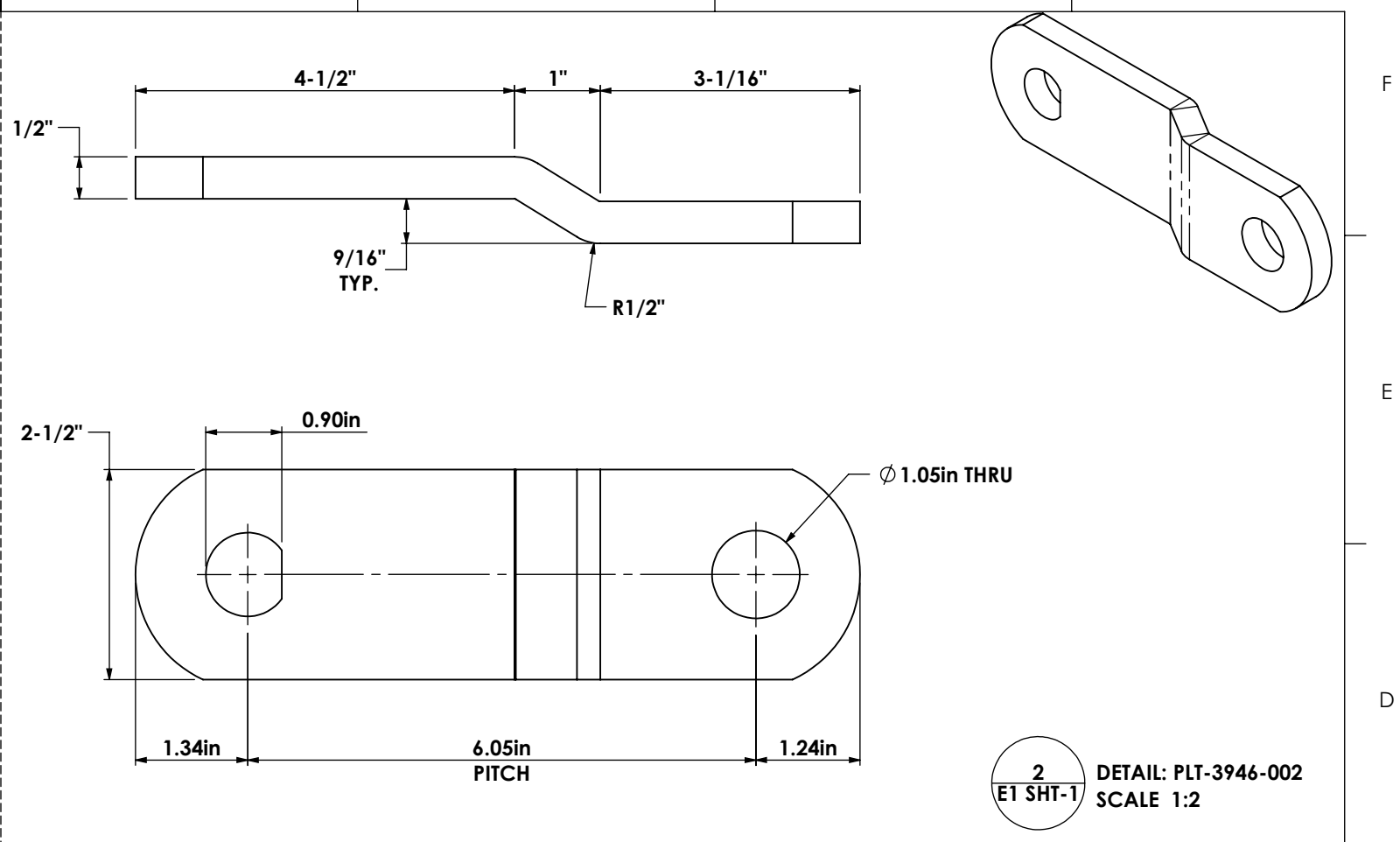
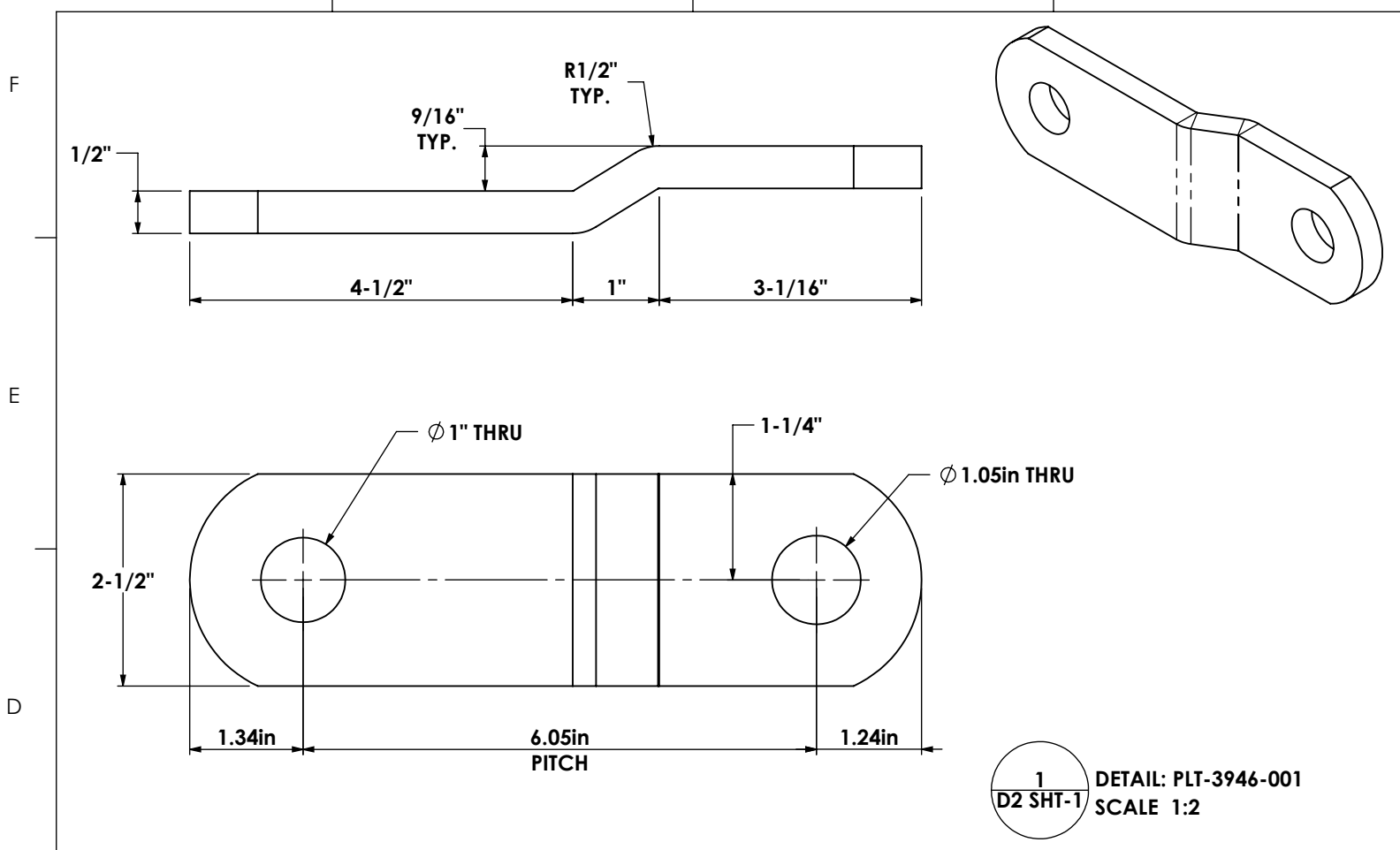
REVISIONS			
REV.	DESCRIPTION	BY	DATE
0	ISSUED FOR CONSTRUCTION	HP	19-Oct-2021

AMH
 PROPRIETARY AND CONFIDENTIAL
 THE INFORMATION CONTAINED IN THIS DRAWING IS THE SOLE PROPERTY OF ADVANCED MATERIAL HANDLING LTD. (AMH). ANY REPRODUCTION IN PART OR AS A WHOLE WITHOUT THE WRITTEN PERMISSION OF AMH IS PROHIBITED.

UNLESS OTHERWISE SPECIFIED: DIMENSIONS ARE IN INCHES	DRAWN	NAME	DATE	PROJECT:
TOLERANCES: FRACTIONAL ± 1/16 ANGULAR MACH ± 1° BEND ± 1° TWO PLACE DECIMAL ± 0.010 THREE PLACE DECIMAL ± 0.005	CHECKED	HS	2021-09-02	
SURFACE: 125/	ENG APPR.			TITLE:
	MFG APPR.			WH150IBR CHAIN
	Q.A.			SIZE
	COMMENTS:			DWG. NO.
				B B-3946
				REV
				0
				SCALE: NTS
				SHEET 1 OF 2

8 7 6 5 4 3 2 1

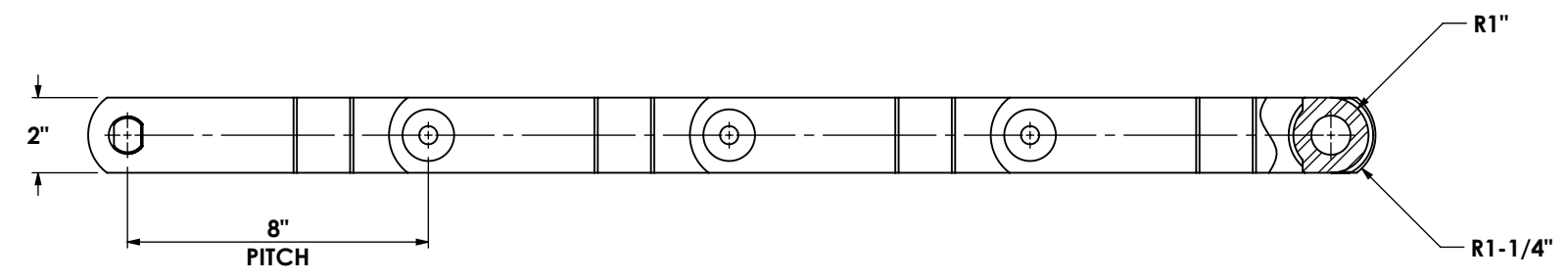
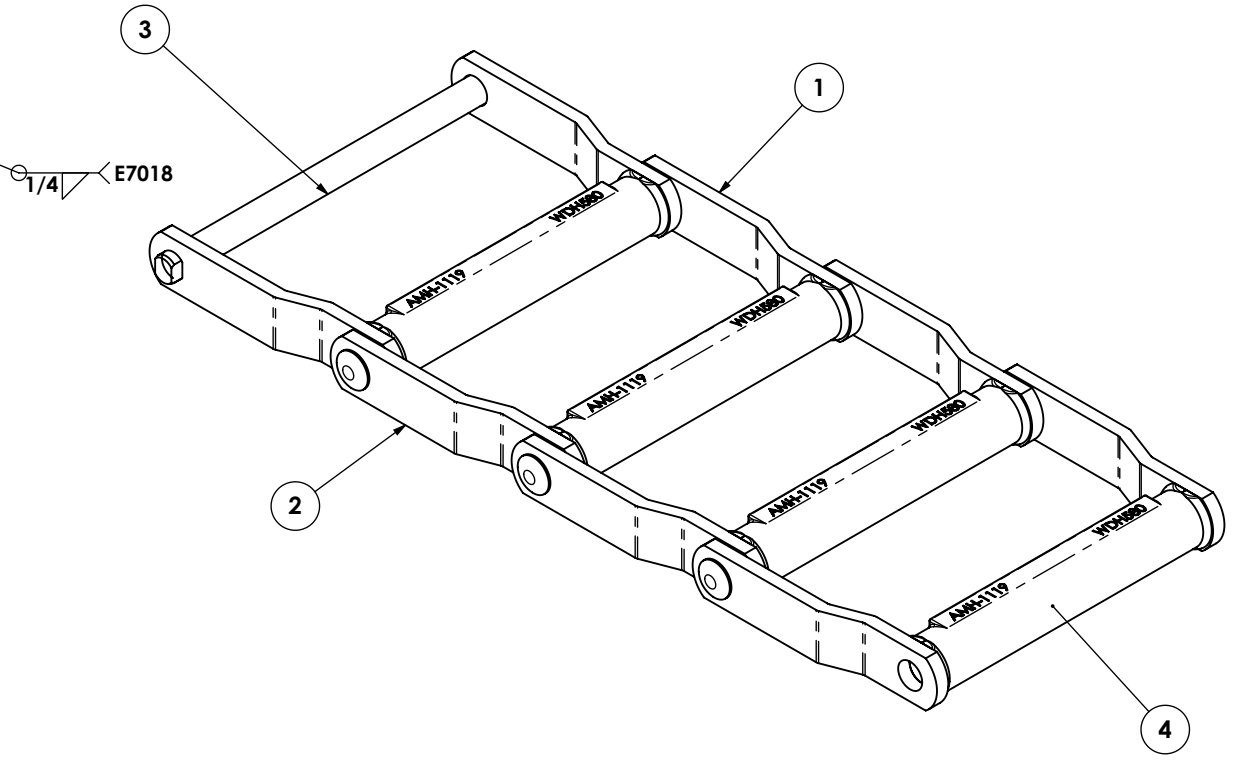
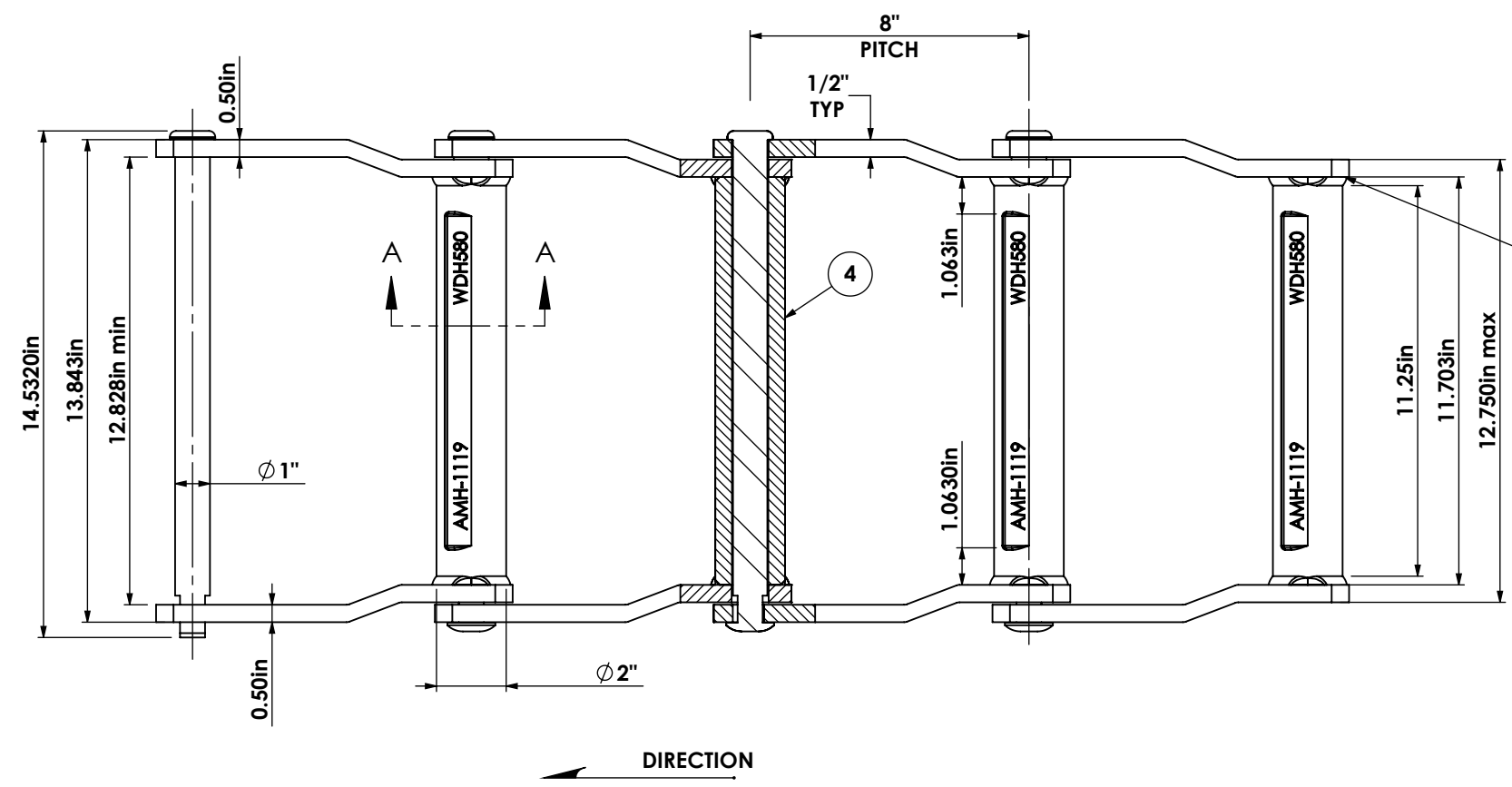
8 7 6 5 4 3 2 1



<p>PROPRIETARY AND CONFIDENTIAL THE INFORMATION CONTAINED IN THIS DRAWING IS THE SOLE PROPERTY OF ADVANCED MATERIAL HANDLING LTD. (AMH). ANY REPRODUCTION IN PART OR AS A WHOLE WITHOUT THE WRITTEN PERMISSION OF AMH IS PROHIBITED.</p>	UNLESS OTHERWISE SPECIFIED: DIMENSIONS ARE IN INCHES	DRAWN	NAME	DATE	PROJECT:
	TOLERANCES: FRACTIONAL ± 1/16 ANGULAR MACH ± 1° BEND ± 1° TWO PLACE DECIMAL ± 0.010 THREE PLACE DECIMAL ± 0.005	CHECKED	HS	2021-09-02	
	SURFACE: $\sqrt{125}$	ENG APPR.			TITLE:
		MFG APPR.			WH150IBR CHAIN
	Q.A.			COMMENTS:	SIZE DWG. NO. REV
		NEXT ASSY	USED ON	PART NO. 20-0407	B B-3946 0
		APPLICATION		EST. WEIGHT:	SCALE: NTS SHEET 2 OF 2

8 7 6 5 4 3 2 1

REVISIONS			
REV.	DESCRIPTION	BY	DATE
0	ISSUED FOR PRODUCTION	LH	2023-05-05
1	UPDATED DIMENSIONS	TR	2024-02-12
2	UPDATED BARREL DIA TOLERANCE	DC	23-Feb-24
3	B SIDE BAR UPDATED, TOLERANCE ADDED	AJ	2024-02-26

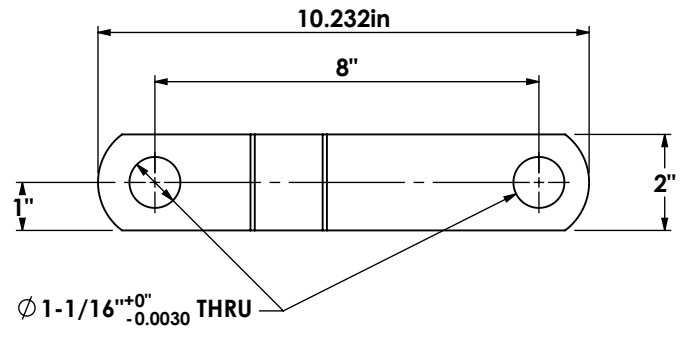
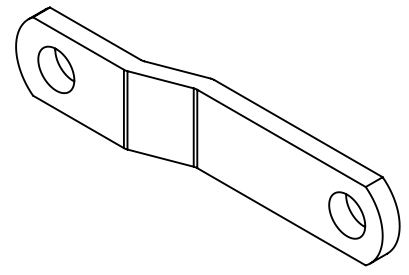
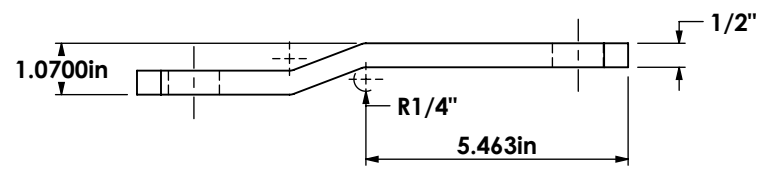


WDH580 HYBRID CHAIN WITH REVERSED BARREL

ITEM NO.	PART NUMBER	DESCRIPTION	MATERIAL	HEAT TREATMENT
1	SBR-3718-001	A SIDE BAR	5140	HRC 25-39
2	SBR-3718-002	B SIDE BAR	5140	HRC 25-39
3	20-0360	WDHR580 CAST ALLOY BARREL	4130	
4	20-0360	WDHR580 CAST ALLOY BARREL	5140	HRC 30-40

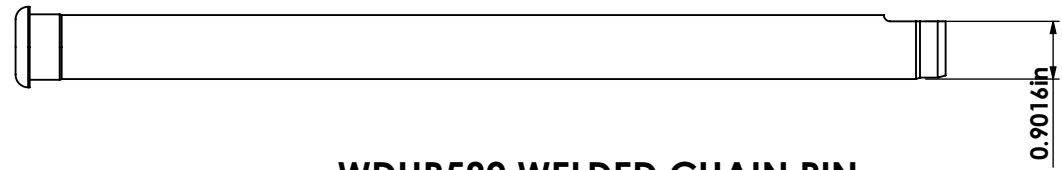
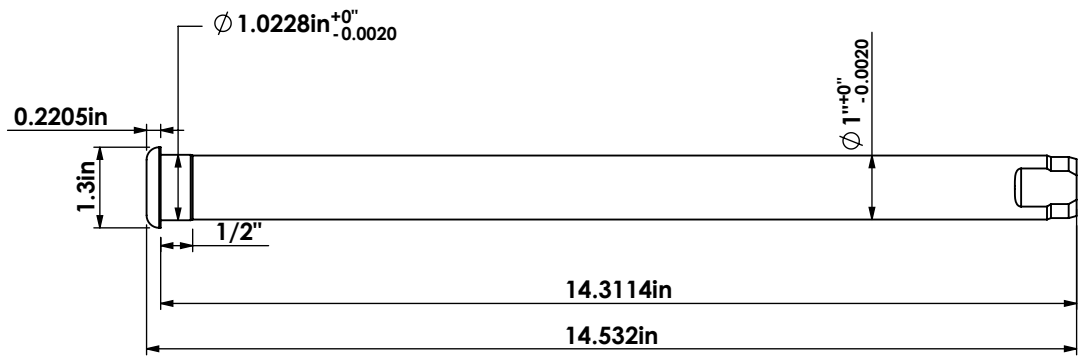
<p>ADVANCED MATERIAL HANDLING LTD. PROPRIETARY AND CONFIDENTIAL THE INFORMATION CONTAINED IN THIS DRAWING IS THE SOLE PROPERTY OF ADVANCED MATERIAL HANDLING LTD. [AMH]. ANY REPRODUCTION IN PART OR AS A WHOLE WITHOUT THE WRITTEN PERMISSION OF AMH IS PROHIBITED.</p>	UNLESS OTHERWISE SPECIFIED: DIMENSIONS ARE IN INCHES TOLERANCES: FRACTIONAL ± 1/16 ANGULAR MACH ± 1° BEND ± 1° TWO PLACE DECIMAL ± 0.010 THREE PLACE DECIMAL ± 0.005	NAME: HP DATE: 2021-02-04	PROJECT:
	CHECKED: LH DATE: 2023-05-05	ENG. APPR.	TITLE: WDH580 HYBRID CHAIN WITH REVERSED BARREL
	MFG APPR.	Q.A.	SIZE: B DWG. NO. B-3718 REV. 3
	COMMENTS:	PART NO. 20-0809 EST. WEIGHT: 24lbs/ft	SCALE: NTS SHEET 1 OF 2
NEXT ASSY	USED ON	APPLICATION	

1



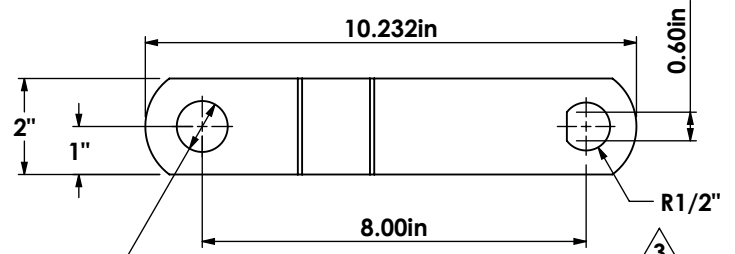
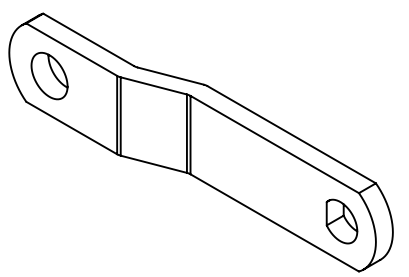
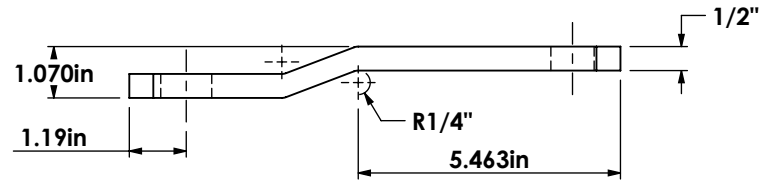
A SIDE BAR

3



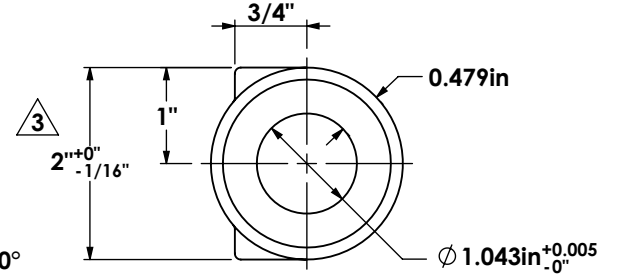
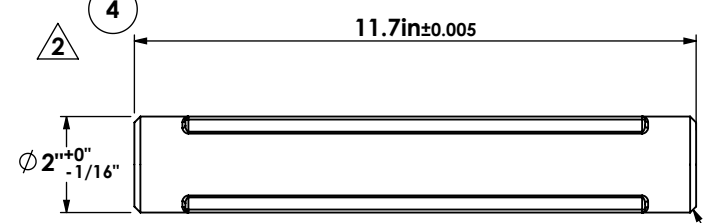
WDHR580 WELDED CHAIN PIN

2

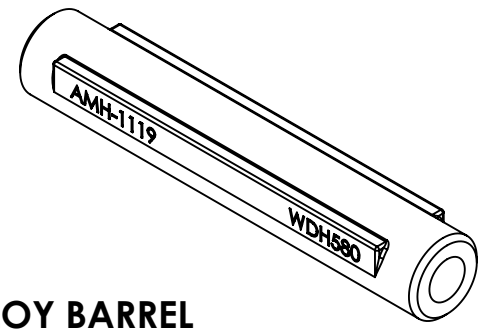
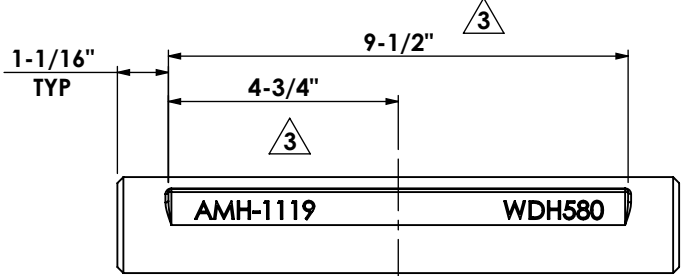


B SIDE BAR

4



CHAMFER
1/8" X 45.00°
TYP. (BOTH ENDS)



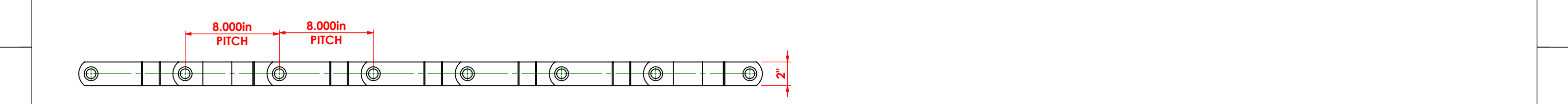
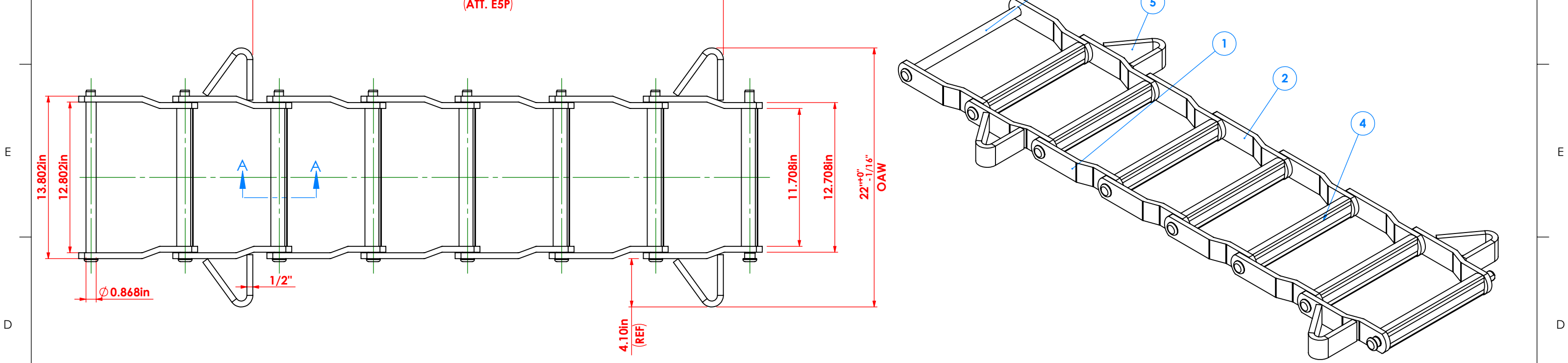
WDH580 CAST ALLOY BARREL

Ø 1-1/16 THRU

<p>AMH ADVANCED MATERIAL HANDLING LTD.</p> <p>PROPRIETARY AND CONFIDENTIAL THE INFORMATION CONTAINED IN THIS DRAWING IS THE SOLE PROPERTY OF ADVANCED MATERIAL HANDLING LTD. [AMH]. ANY REPRODUCTION IN PART OR AS A WHOLE WITHOUT THE WRITTEN PERMISSION OF AMH IS PROHIBITED.</p>			UNLESS OTHERWISE SPECIFIED: DIMENSIONS ARE IN INCHES		NAME	DATE	PROJECT:	
			TOLERANCES: FRACTIONAL ± 1/16 ANGULAR MACH ± 1° BEND ± 1° TWO PLACE DECIMAL ± 0.010 THREE PLACE DECIMAL ± 0.005		DRAWN	HP	2021-02-04	TITLE: WDH580 DRAG CHAIN WITH CAST ALLOY STEEL BARREL SIZE DWG. NO. REV B B-3718 3 SCALE: NTS SHEET 2 OF 2
			SURFACE: 125/		CHECKED	LH	2023-05-05	
					ENG APPR.			
				MFG APPR.				
	NEXT ASSY	USED ON	PART NO.		COMMENTS:			
	APPLICATION		EST. WEIGHT: 24lbs/ft					

8 7 6 5 4 3 2 1

REVISIONS				
ZONE	REV.	DESCRIPTION	BY	DATE
	0	ISSUED FOR PRODUCTION	DC	7/3/2024



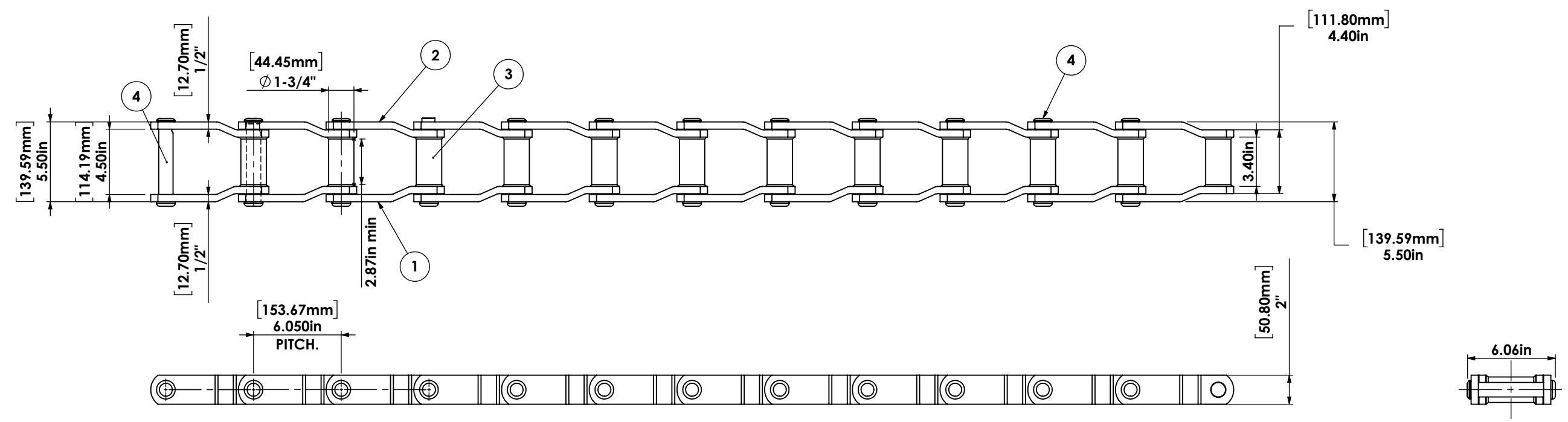
ITEM NO.	PART NUMBER	DESCRIPTION	Material	SPECS
1	L1-1732-C	WHD480 SIDE BAR-B	5140	THRU HARDENED HRC 25-39
2	L1-1732-B	WHD480 SIDE BAR-A (HOLE FLAT)	5140	THRU HARDENED HRC 25-39
3	L1-1732-D	WDH480 Ø7/8" PIN	5140	THRU HARDENED HRC 35-42
4	L1-1732-A	WHD480 D-STYLE BARREL	5140	THRU HARDENED HRC 30-40
5	20-0115	DRAG CHAIN WING ATTACHMENT	ASTM A36 Steel	

<p>PROPRIETARY AND CONFIDENTIAL THE INFORMATION CONTAINED IN THIS DRAWING IS THE SOLE PROPERTY OF ADVANCED MATERIAL HANDLING LTD. (AMH). ANY REPRODUCTION IN PART OR AS A WHOLE WITHOUT THE WRITTEN PERMISSION OF AMH IS PROHIBITED.</p>	NEXT ASSY	USED ON	PART NO.	20-0593	
	APPLICATION		EST. WEIGHT:	19.2 lbs/ft	
	UNLESS OTHERWISE SPECIFIED: DIMENSIONS ARE IN INCHES		DRAWN	NAME	DATE
	TOLERANCES: FRACTIONAL ± 1/16 ANGULAR MACH ± 1° BEND ± 1° TWO PLACE DECIMAL ± 0.010 THREE PLACE DECIMAL ± 0.005		CHECKED	PROJECT:	
SURFACE: 125/		ENG APPR.	TITLE:		
		MFG APPR.	WHD480 DRAG CHAIN CW 'D' STYLE BARREL WITH S22 ATTACHMENT E5P		
		Q.A.	SIZE	DWG. NO.	
		COMMENTS:	B	B-3123	
			REV	0	
			SCALE:	NTS SHEET 1 OF 1	

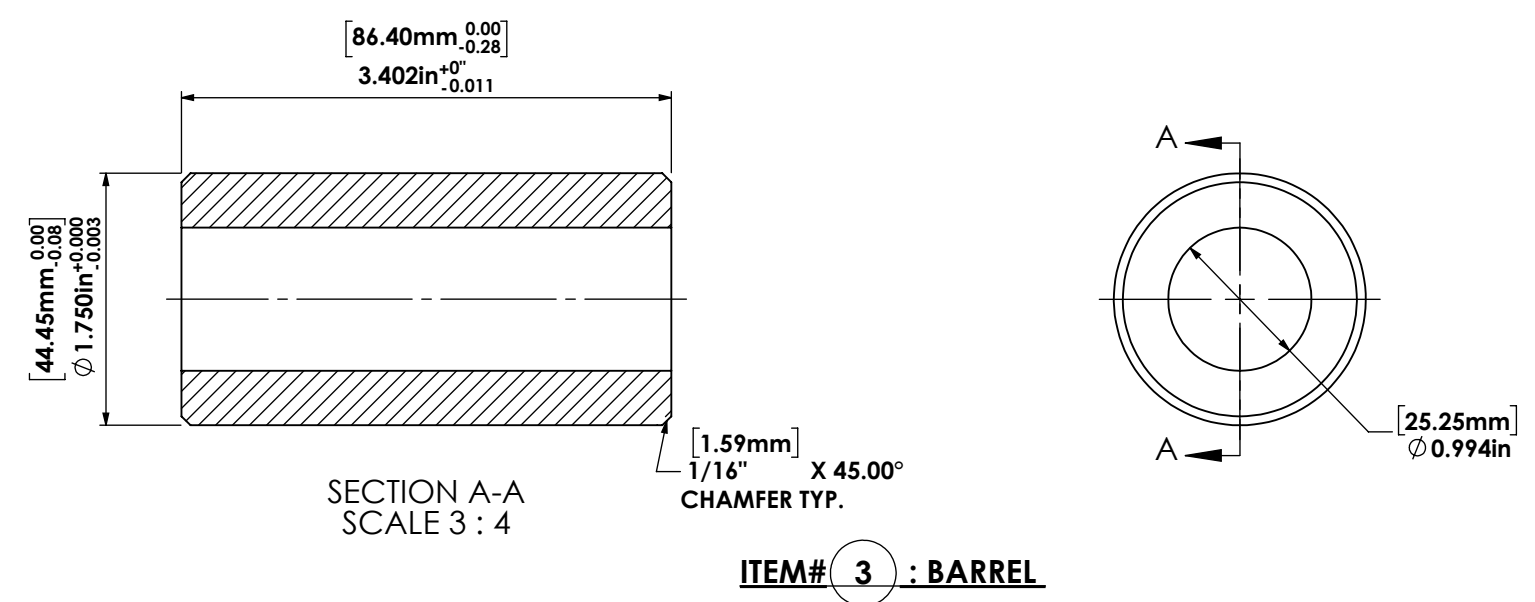
FLAT PATTERN: L1-1753-A 0.5in A36
EST WT: 2.69 lbs
MATERIAL: ASTM A36 Steel

8 7 6 5 4 3 2 1

REVISIONS			
REV.	DESCRIPTION	BY	DATE
1	• UPDATE DRAWING TO "B" SIZE.	HY	11/4/19
2	UPDATED THE PIN	J.G	2024-08-27



WH132IBR CHAIN



Note:

- 1) RIVET CORE HARDNESS HRC 30-40 INDUCTION HARDEDNED DEPTH 2.5-4.6 SURFACE HARDNESS HRC 55-62
- 2) SIDE BAR-THRU HARDENED HRC 25-39
- 3) BARREL CORE HARDNESS HRC 30-40 INDUCTION HARDENED DEPTH 2.5-4.6 SURFACE HARDNESS HRC 55-62

ITEM NO.	PART NUMBER	DESCRIPTION	Material
1	20-0111	WH132IBR CHAIN	SEE NOTE 1
2	L1-1734-B	SQUARE SIDE BAR	5140
3	L1-1734-C	BARREL	5140
4	20-0118	PIN	5140

AMH

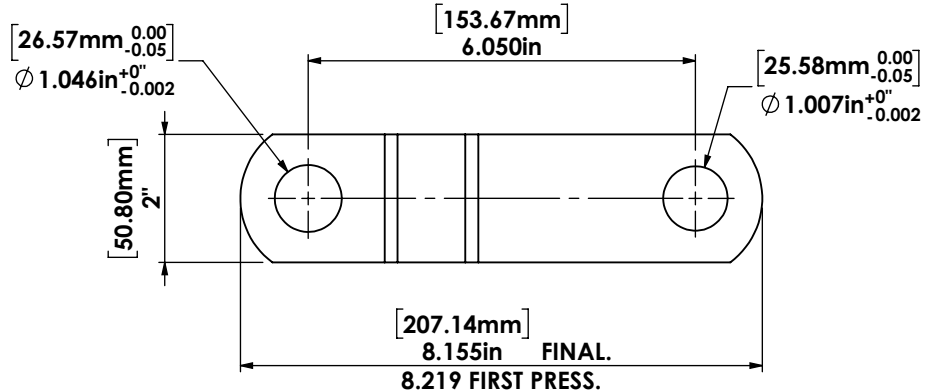
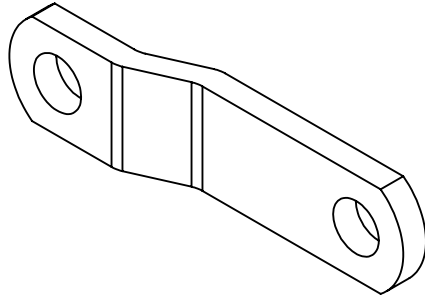
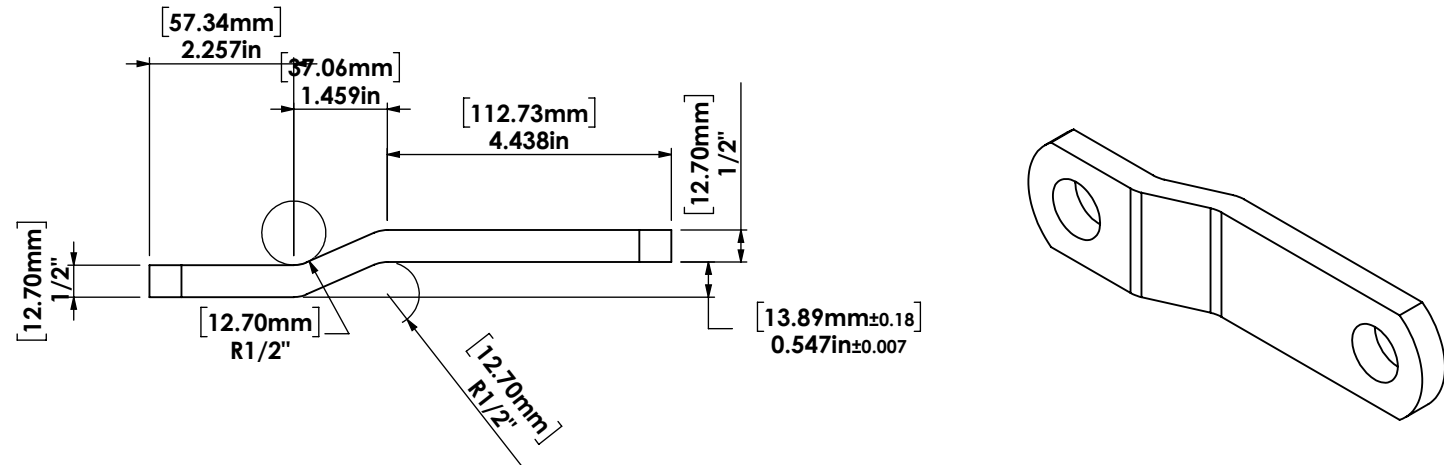
PROPRIETARY AND CONFIDENTIAL
THE INFORMATION CONTAINED IN THIS DRAWING IS THE SOLE PROPERTY OF ADVANCED MATERIAL HANDLING LTD. (AMH). ANY REPRODUCTION IN PART OR AS A WHOLE WITHOUT THE WRITTEN PERMISSION OF AMH IS PROHIBITED.

UNLESS OTHERWISE SPECIFIED: DIMENSIONS ARE IN INCHES		NAME	DATE	PROJECT:
TOLERANCES: FRACTIONAL $\pm 1/16$ ANGULAR MACH $\pm 1^\circ$ BEND $\pm 1^\circ$ TWO PLACE DECIMAL ± 0.010 THREE PLACE DECIMAL ± 0.005	CHECKED	ANDY LEE	2015-01-30	TITLE: WH132IBR CHAIN
SURFACE: $\sqrt{125}$	ENG APPR.			
NEXT ASSY	USED ON	PART NO. 20-0111		SIZE B
APPLICATION	EST. WEIGHT:	-		DWG. NO. B-1734
				REV 2
				SCALE: NTS SHEET 1 OF 2

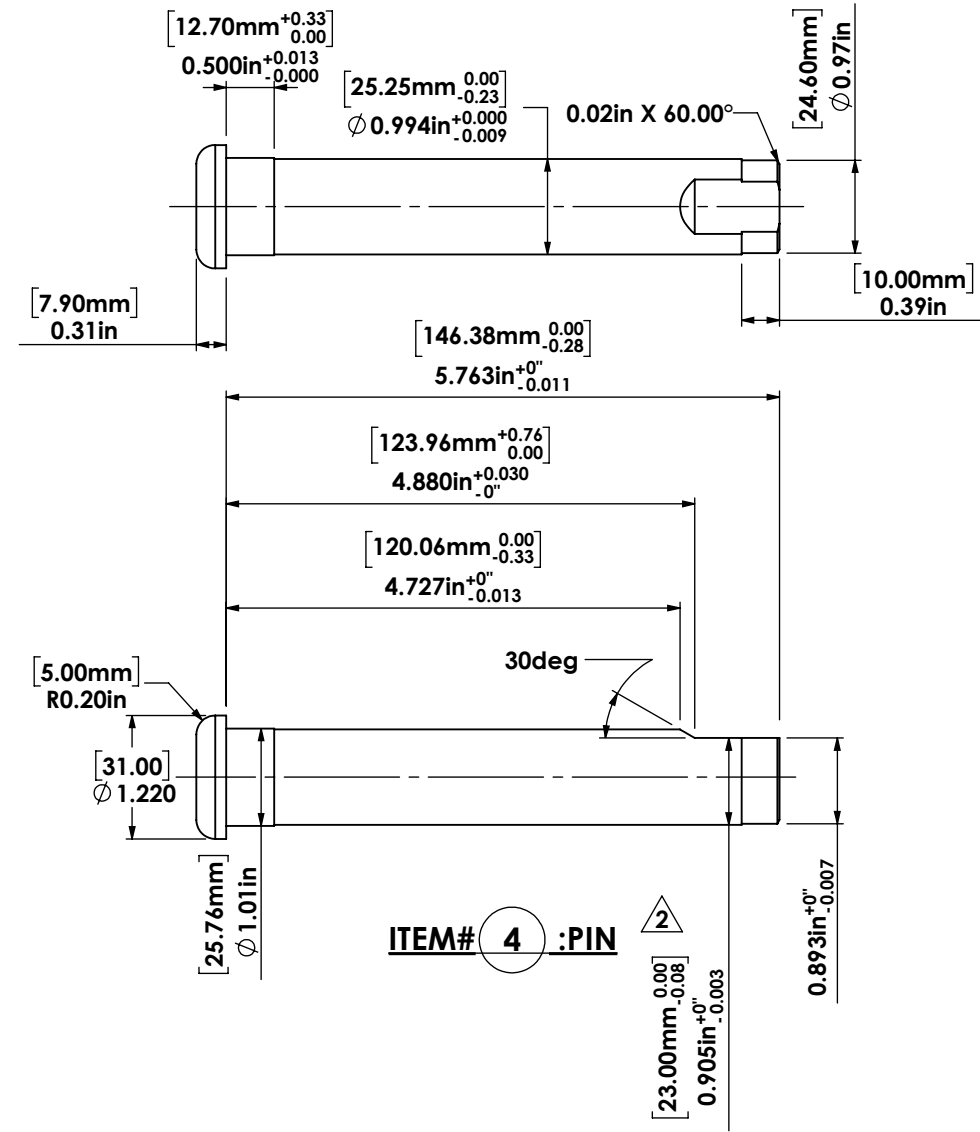
8 7 6 5 4 3 2 1

F
E
D
C
B
A

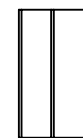
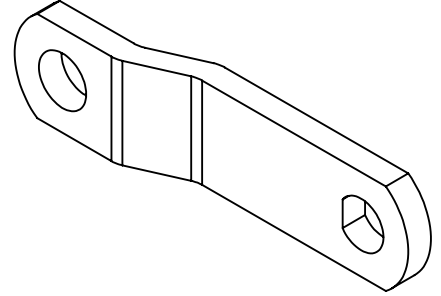
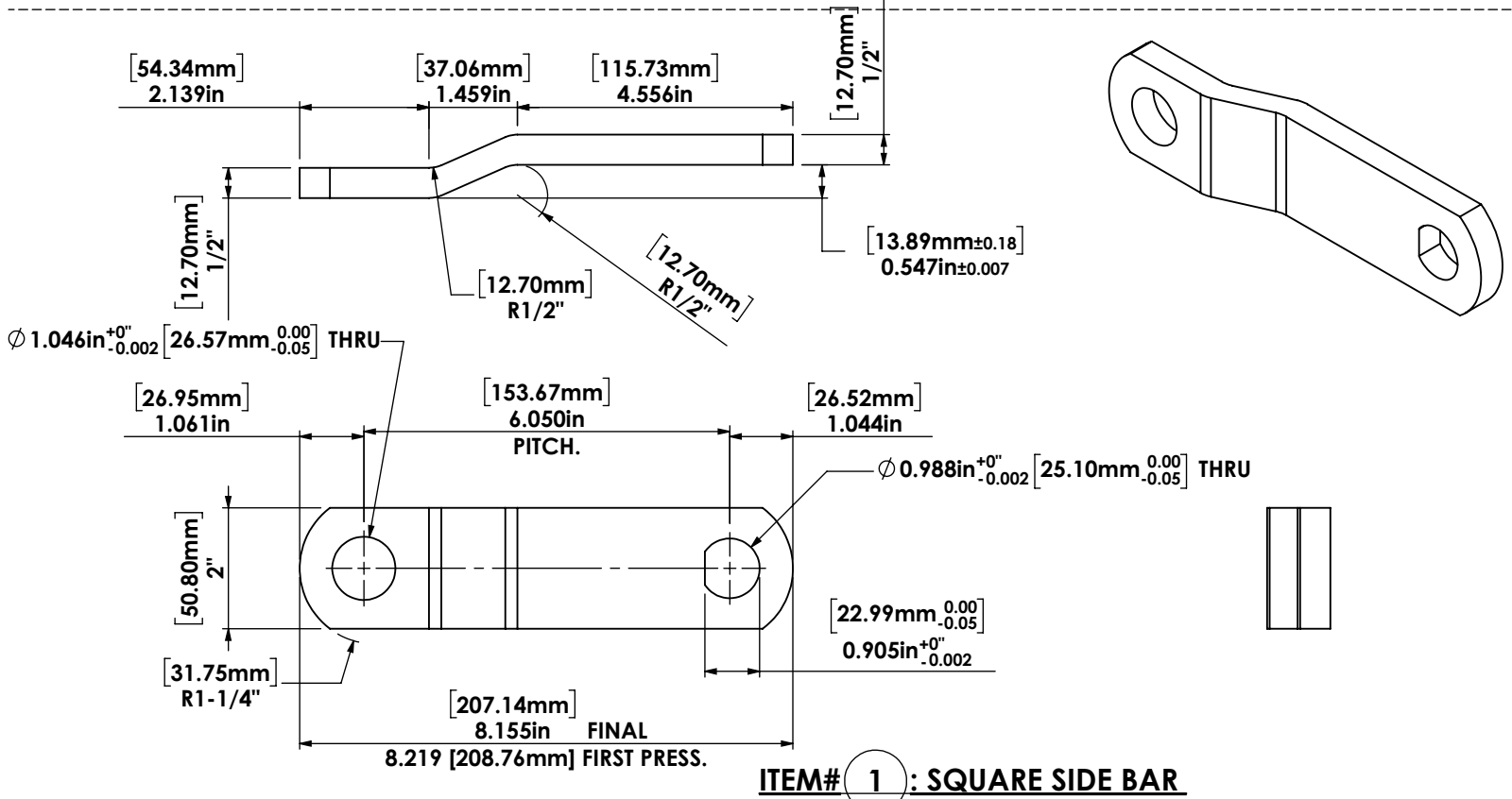
F
E
D
C
B
A



ITEM# 2 : WH132IBR CHAIN



ITEM# 4 : PIN

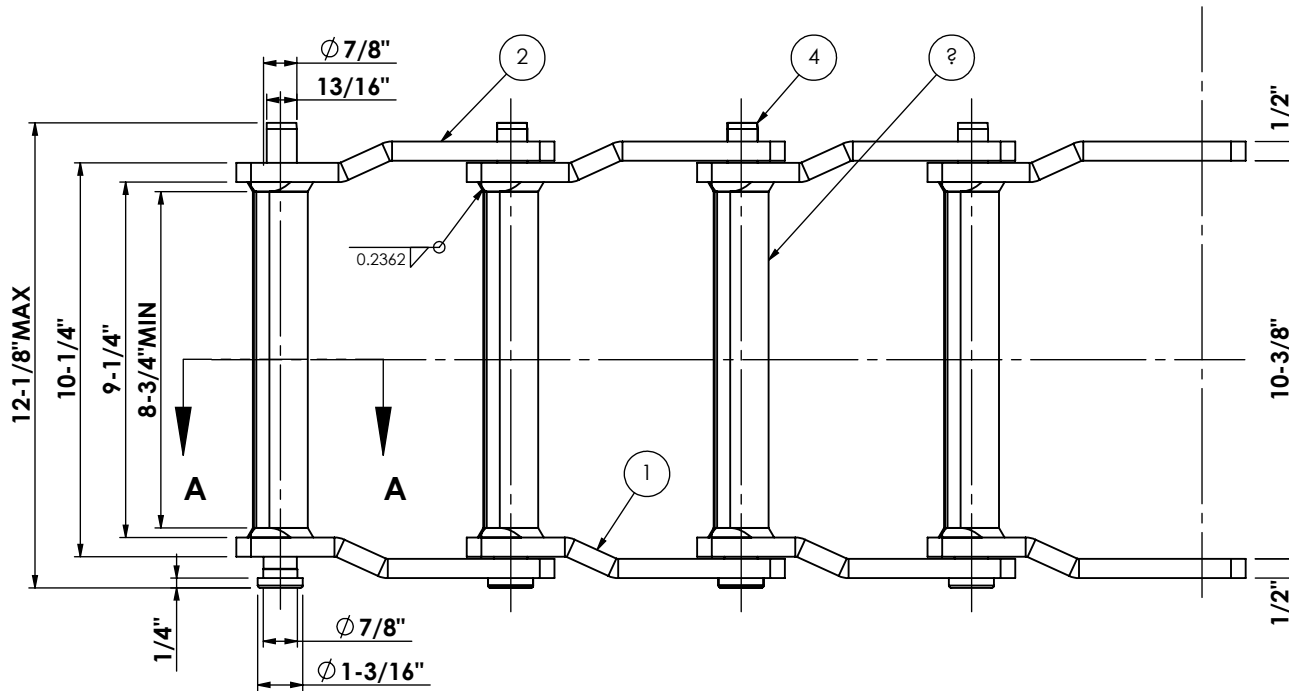
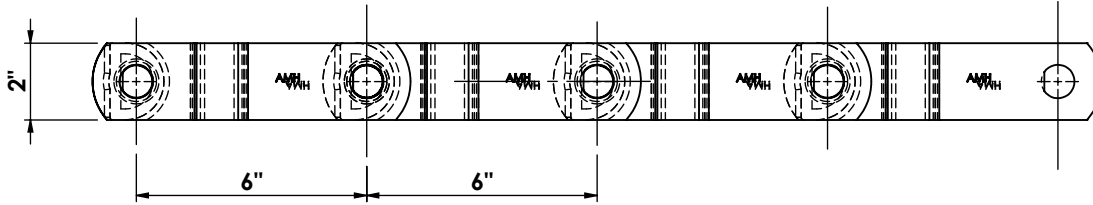


ITEM# 1 : SQUARE SIDE BAR

<p>PROPRIETARY AND CONFIDENTIAL THE INFORMATION CONTAINED IN THIS DRAWING IS THE SOLE PROPERTY OF ADVANCED MATERIAL HANDLING LTD. (AMH). ANY REPRODUCTION IN PART OR AS A WHOLE WITHOUT THE WRITTEN PERMISSION OF AMH IS PROHIBITED.</p>	UNLESS OTHERWISE SPECIFIED: DIMENSIONS ARE IN INCHES		NAME	DATE	PROJECT:	
	TOLERANCES: FRACTIONAL ± 1/16 ANGULAR MACH ± 1° BEND ± 1° TWO PLACE DECIMAL ± 0.010 THREE PLACE DECIMAL ± 0.005		DRAWN	ANDY LEE	2015-01-30	
	SURFACE: $\sqrt{125}$		CHECKED			TITLE:
	NEXT ASSY		USED ON			WH132IBR CHAIN
	APPLICATION		PART NO.	20-0111		SIZE
		EST. WEIGHT:			DWG. NO.	
					REV	
					SCALE: NTS	
					SHEET 2 OF 2	

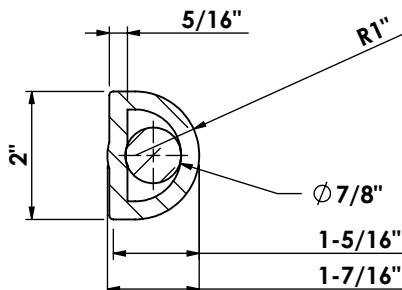
8 7 6 5 4 3 2 1

REVISIONS			
REV.	DESCRIPTION	BY:	DATE
A	ISSUED FOR INTERNAL REVIEW	RS	7/20/22



- TECHNICAL REQUIREMENTS:-
- 1.-ASTM EQUIVALENT TO 40Cr IS 5140
 - 2.-BREAKING LOAD QMIN=351.4KN
 - 3.-HINGES SHOULD BE FLEXIBLE CAN RATATED FLEXIBLY
 - 4.-CHAIN SHOULD BE CLEANED, OILED, PACKED

ITEM NO.	DESCRIPTION	Material	HARDNESS
1	SIDE BAR-A	40Cr	HRC25-39
2	SIDE BAR-B	40Cr	HRC25-39
3	BARREL	40Cr	HRC30-40
4	PIN	40Cr	HRC37-42



SECTION A-A
SCALE 1 : 3



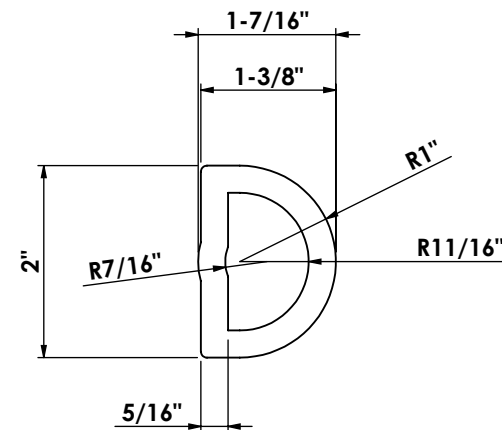
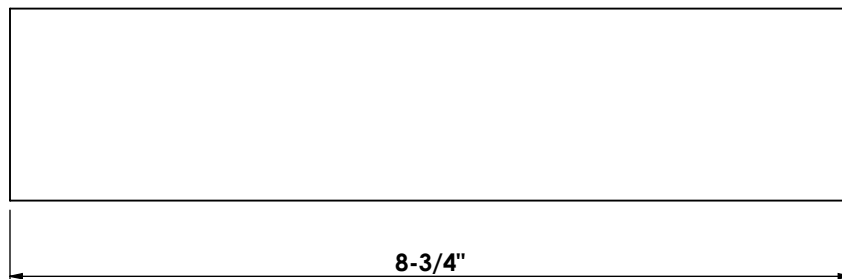
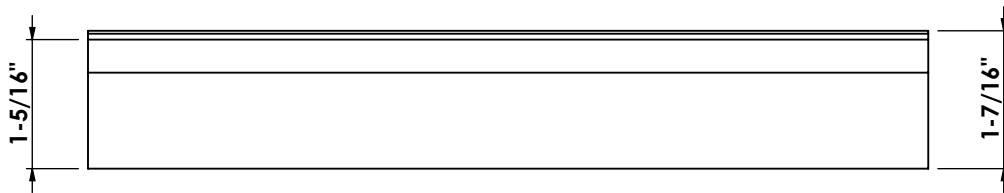
THE INFORMATION CONTAINED IN THIS DRAWING IS THE SOLE PROPERTY OF ADVANCED MATERIAL HANDLING. ANY REPRODUCTION IN PART OR AS A WHOLE WITHOUT THE WRITTEN PERMISSION OF ADVANCED MATERIAL HANDLING IS PROHIBITED.

UNLESS OTHERWISE SPECIFIED:	
DIMENSIONS ARE IN INCHES	
TOLERANCES:	
FRACTIONAL: $\pm 1/16$	
ANGULAR: $\pm 1^\circ$	
TWO PLACE DECIMAL: ± 0.010	
THREE PLACE DECIMAL: ± 0.005	
SURFACE: $\sqrt{125}$	
MATERIAL:	
PART#	20-1073

	NAME	DATE
DRAWN	RS	7/20/22
CHECKED		
DESIGN		
MFG APPR.		
Q.A.		
COMMENTS:		

TITLE:		
WDH120 CHAIN FULLY HEAT TREATED		
DWG. NO.		REV
A-4183		A
SCALE: NTS		SHEET 1 OF 5

REVISIONS			
REV.	DESCRIPTION	BY:	DATE
A	ISSUED FOR INTERNAL REVIEW	RS	7/20/22



PROPRIETARY AND CONFIDENTIAL

THE INFORMATION CONTAINED IN THIS DRAWING IS THE SOLE PROPERTY OF ADVANCED MATERIAL HANDLING. ANY REPRODUCTION IN PART OR AS A WHOLE WITHOUT THE WRITTEN PERMISSION OF ADVANCED MATERIAL HANDLING IS PROHIBITED.

UNLESS OTHERWISE SPECIFIED:

DIMENSIONS ARE IN INCHES
TOLERANCES:
FRACTIONAL: $\pm 1/16$
ANGULAR: $\pm 1^\circ$
TWO PLACE DECIMAL: ± 0.010
THREE PLACE DECIMAL: ± 0.005

SURFACE: $\sqrt{125}$

MATERIAL:

40Cr

PART# 20-1073

	NAME	DATE
DRAWN	RS	7/20/22
CHECKED		
DESIGN		
MFG APPR.		
Q.A.		

COMMENTS:

TITLE:

WDH120 CHAIN FULLY
HEAT TREATED

DWG. NO.

A-4183

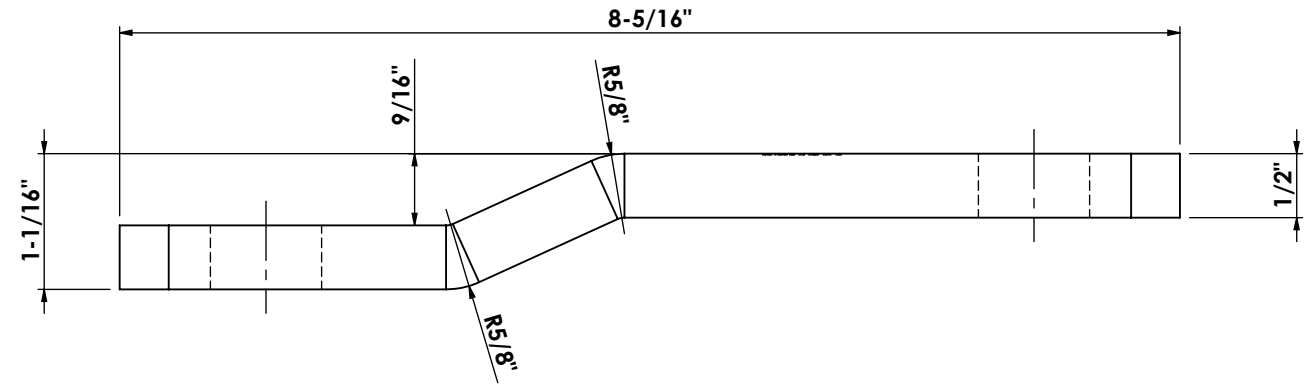
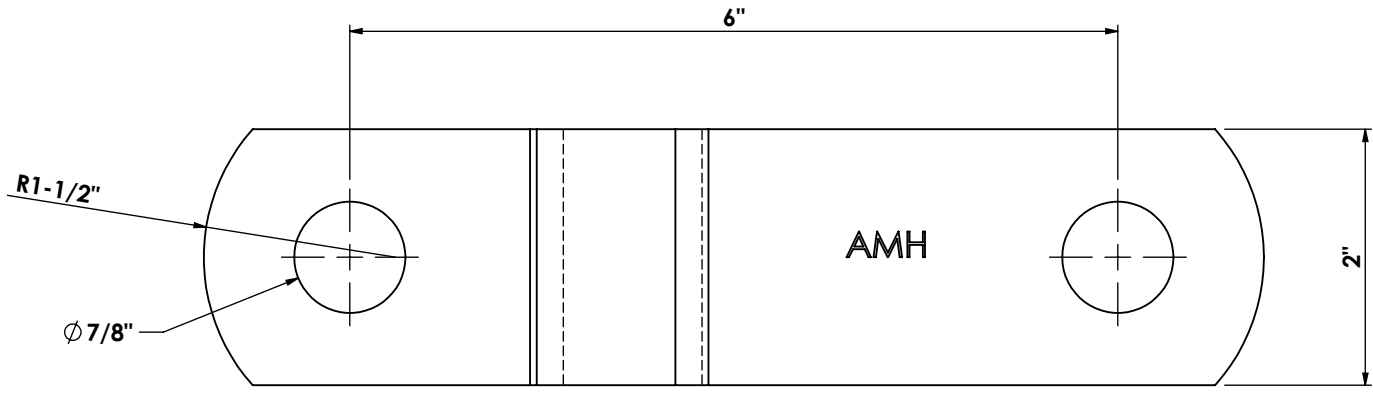
REV

A

SCALE: NTS

SHEET 2 OF 5

REVISIONS			
REV.	DESCRIPTION	BY:	DATE
A	ISSUED FOR INTERNAL REVIEW	RS	7/20/22



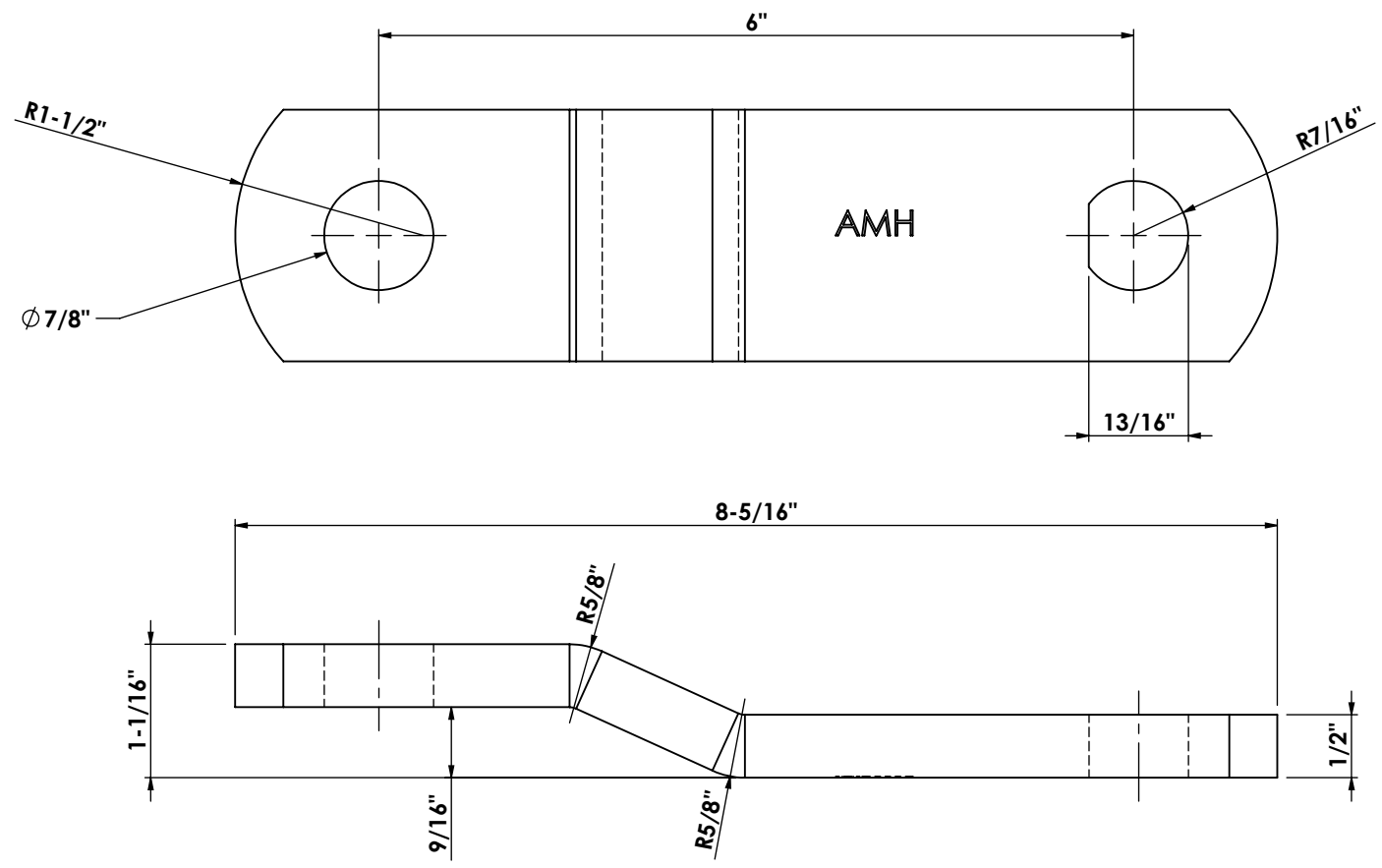

PROPRIETARY AND CONFIDENTIAL

THE INFORMATION CONTAINED IN THIS DRAWING IS THE SOLE PROPERTY OF ADVANCED MATERIAL HANDLING. ANY REPRODUCTION IN PART OR AS A WHOLE WITHOUT THE WRITTEN PERMISSION OF ADVANCED MATERIAL HANDLING IS PROHIBITED.

UNLESS OTHERWISE SPECIFIED: DIMENSIONS ARE IN INCHES TOLERANCES: FRACTIONAL: $\pm 1/16$ ANGULAR: $\pm 1^\circ$ TWO PLACE DECIMAL: ± 0.010 THREE PLACE DECIMAL: ± 0.005		NAME	DATE
	DRAWN	RS	7/20/22
SURFACE: $\sqrt{125}$	CHECKED		
	DESIGN		
MATERIAL: 40Cr	MFG APPR.		
	Q.A.		
PART# 20-1073	COMMENTS:		

TITLE: WDH120 CHAIN FULLY HEAT TREATED		
DWG. NO. A-4183	REV A	
SCALE: NTS	SHEET 3 OF 5	

REVISIONS			
REV.	DESCRIPTION	BY:	DATE
A	ISSUED FOR INTERNAL REVIEW	RS	7/20/22




ADVANCED MATERIAL HANDLING LTD.

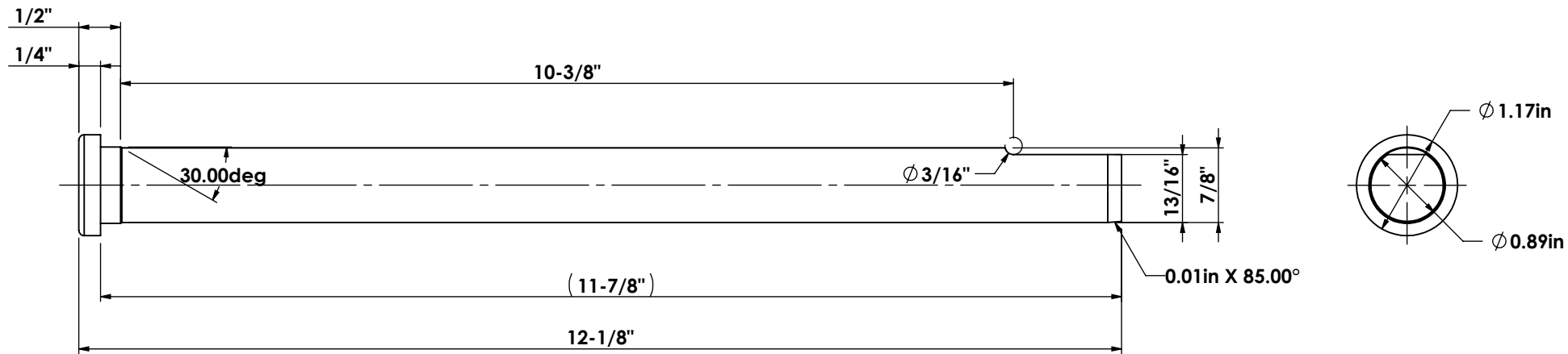
PROPRIETARY AND CONFIDENTIAL

THE INFORMATION CONTAINED IN THIS DRAWING IS THE SOLE PROPERTY OF ADVANCED MATERIAL HANDLING. ANY REPRODUCTION IN PART OR AS A WHOLE WITHOUT THE WRITTEN PERMISSION OF ADVANCED MATERIAL HANDLING IS PROHIBITED.

UNLESS OTHERWISE SPECIFIED: DIMENSIONS ARE IN INCHES TOLERANCES: FRACTIONAL: $\pm 1/16$ ANGULAR: $\pm 1^\circ$ TWO PLACE DECIMAL: ± 0.010 THREE PLACE DECIMAL: ± 0.005	NAME	DATE
	DRAWN	RS 7/20/22
SURFACE: $\sqrt{125}$	CHECKED	
	DESIGN	
MATERIAL: 40Cr	MFG APPR.	
	Q.A.	
PART# 20-1073	COMMENTS:	

TITLE: WDH120 CHAIN FULLY HEAT TREATED		
DWG. NO. A-4183	REV A	
SCALE: NTS	SHEET 4 OF 5	

REVISIONS			
REV.	DESCRIPTION	BY:	DATE
A	ISSUED FOR INTERNAL REVIEW	RS	7/20/22



PROPRIETARY AND CONFIDENTIAL

THE INFORMATION CONTAINED IN THIS DRAWING IS THE SOLE PROPERTY OF ADVANCED MATERIAL HANDLING. ANY REPRODUCTION IN PART OR AS A WHOLE WITHOUT THE WRITTEN PERMISSION OF ADVANCED MATERIAL HANDLING IS PROHIBITED.

UNLESS OTHERWISE SPECIFIED:

DIMENSIONS ARE IN INCHES
 TOLERANCES:
 FRACTIONAL: $\pm 1/16$
 ANGULAR: $\pm 1^\circ$
 TWO PLACE DECIMAL: ± 0.010
 THREE PLACE DECIMAL: ± 0.005

SURFACE: $\sqrt{125}$

MATERIAL:

40Cr

PART# 20-1073

	NAME	DATE
DRAWN	RS	7/20/22
CHECKED		
DESIGN		
MFG APPR.		
Q.A.		

COMMENTS:

TITLE:

WDH120 CHAIN FULLY HEAT TREATED

DWG. NO.

A-4183

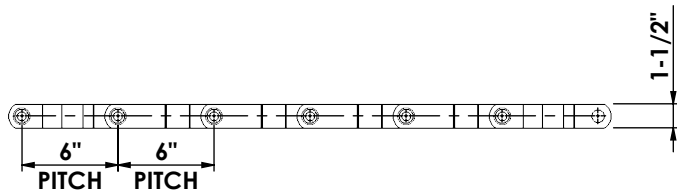
REV

A

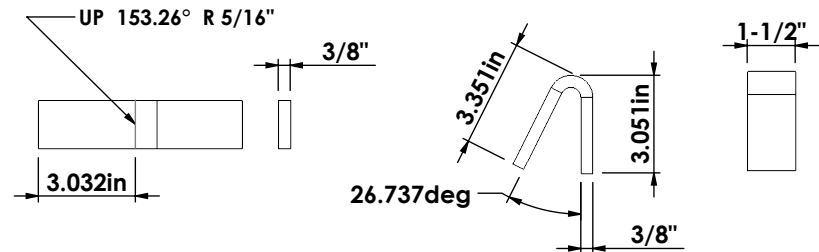
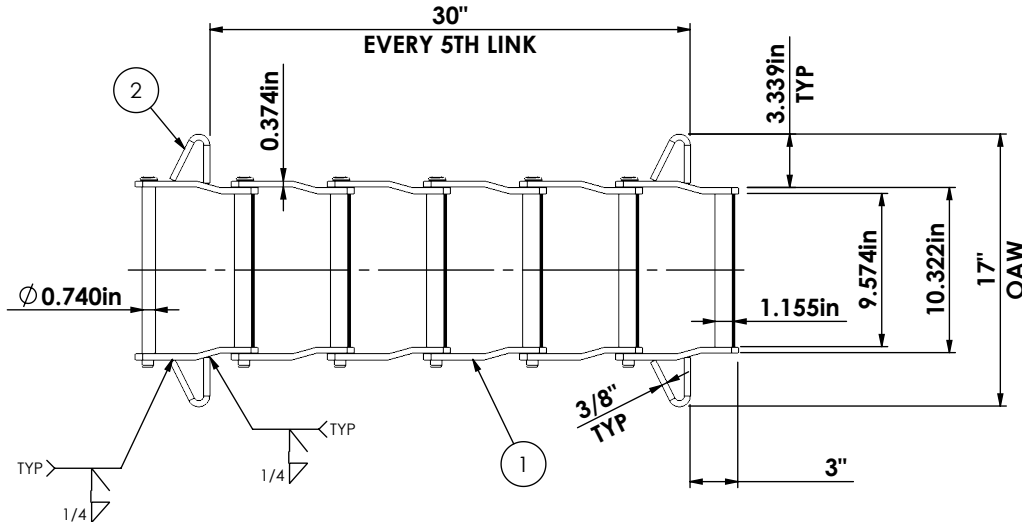
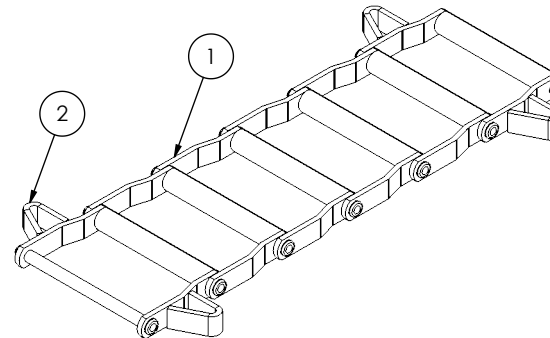
SCALE: NTS

SHEET 5 OF 5

REVISIONS			
REV.	DESCRIPTION	BY:	DATE
0	ISSUED FOR PRODUCTION	JLS	12-MAY-2022



CHAIN DIRECTION →



2 DETAIL: PLT-4092-001
DXF: PLT-4092-001 0.375IN ASTM A36
SCALE 1:6

ITEM NO.	PART NUMBER	DESCRIPTION	Material
1	TBD	WHD-110 CHAIN	
2	PLT-4092-001	17" WING	ASTM A36 Steel

NOTES:

- SEE DRAWING A-1733 FOR CHAIN DETAILS
- ATTACH WINGS ON EVERY 5TH LINK IN THE SAME DIRECTION



PROPRIETARY AND CONFIDENTIAL

THE INFORMATION CONTAINED IN THIS DRAWING IS THE SOLE PROPERTY OF ADVANCED MATERIAL HANDLING. ANY REPRODUCTION IN PART OR AS A WHOLE WITHOUT THE WRITTEN PERMISSION OF ADVANCED MATERIAL HANDLING IS PROHIBITED.

UNLESS OTHERWISE SPECIFIED:

DIMENSIONS ARE IN INCHES
TOLERANCES:
FRACTIONAL: $\pm 1/16$
ANGULAR: $\pm 1^\circ$
TWO PLACE DECIMAL: ± 0.010
THREE PLACE DECIMAL: ± 0.005

SURFACE: $\sqrt{125}$

MATERIAL:

SEE BOM

PART# 20-0305

	NAME	DATE
DRAWN	JLS	2/11/2022
CHECKED		
DESIGN		
MFG APPR.		
Q.A.		

COMMENTS:

WEIGHT: 11.802 lbs/FT

TITLE:
**WDH110 DRAG CHAIN CW
17IN OAW WINGS E5P**

DWG. NO.

A-4092

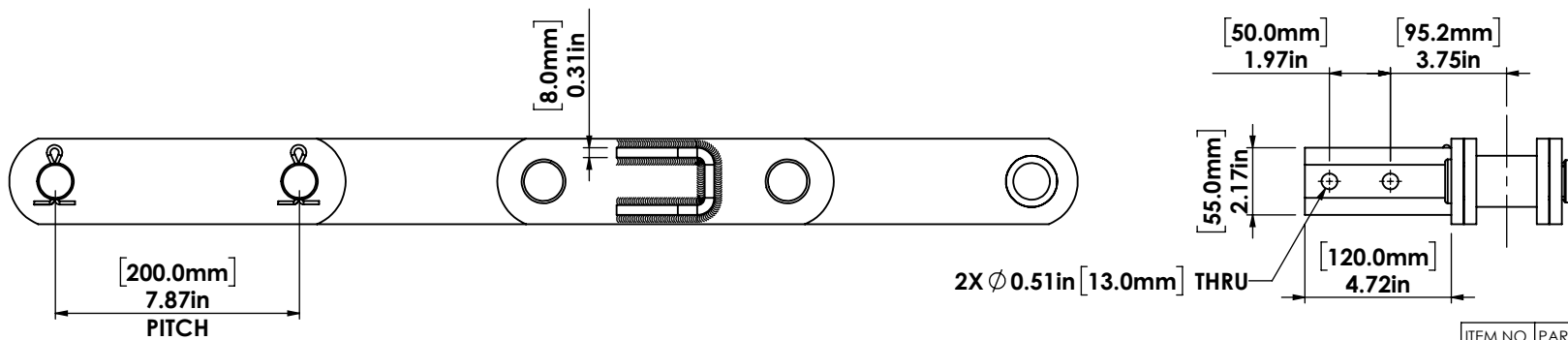
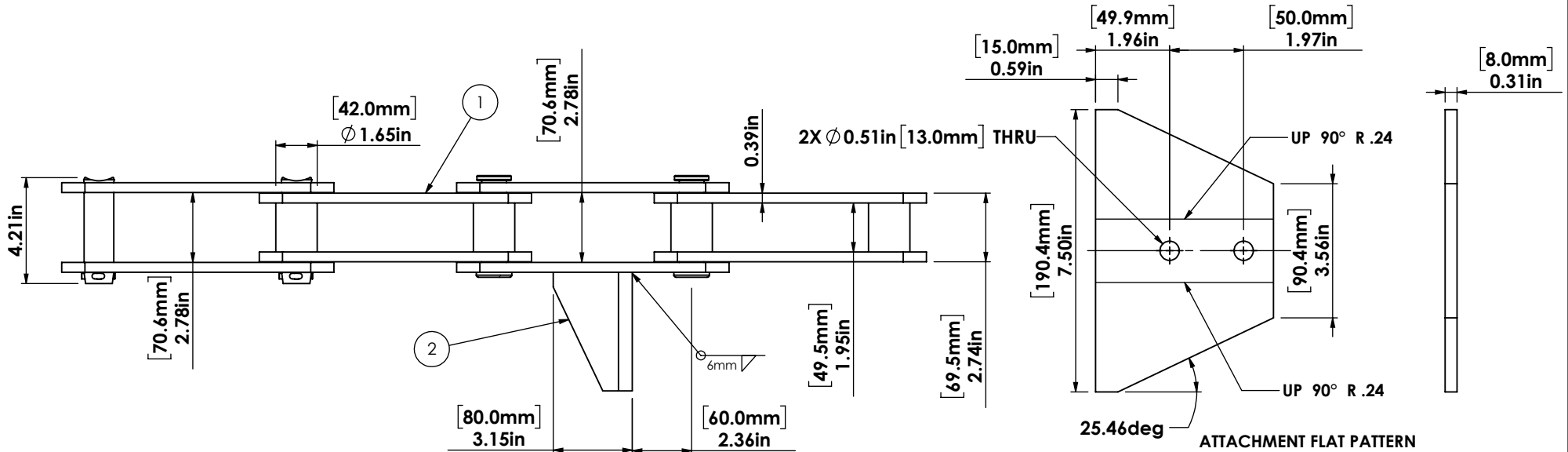
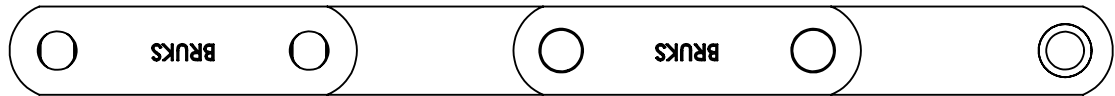
REV

0

SCALE: NTS

SHEET 1 OF 1

REVISIONS			
REV.	DESCRIPTION	BY:	DATE
1	UPDATED THE STAMP ON CHAIN	TR	2024-11-14



ITEM NO.	PART NUMBER	DESCRIPTION	QTY.
1		M315-A-200 HVY CHAIN	1
2	PLT-3996-001	ATTACHMENT PLATE	1

- NOTES:
- SEE DRAWING A-3997 FOR CHAIN DETAILS
 - USE ATTACHMENT EVERY 2ND OUTER SIDEBAR (EVERY 4TH PITCH)

PROPRIETARY AND CONFIDENTIAL

THE INFORMATION CONTAINED IN THIS DRAWING IS THE SOLE PROPERTY OF ADVANCED MATERIAL HANDLING. ANY REPRODUCTION IN PART OR AS A WHOLE WITHOUT THE WRITTEN PERMISSION OF ADVANCED MATERIAL HANDLING IS PROHIBITED.

UNLESS OTHERWISE SPECIFIED:		NAME	DATE
DIMENSIONS ARE IN INCHES		DRAWN	CF 2021-10-19
TOLERANCES:		CHECKED	
FRACTIONAL: ±1/16		DESIGN	
ANGULAR: ±1°		MFG APPR.	
TWO PLACE DECIMAL: ±0.010		Q.A.	
THREE PLACE DECIMAL: ±0.005		COMMENTS:	
SURFACE: 125/			
MATERIAL:			
PART# 30-0536			

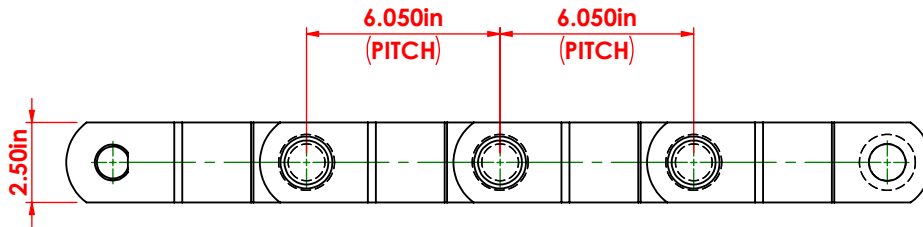
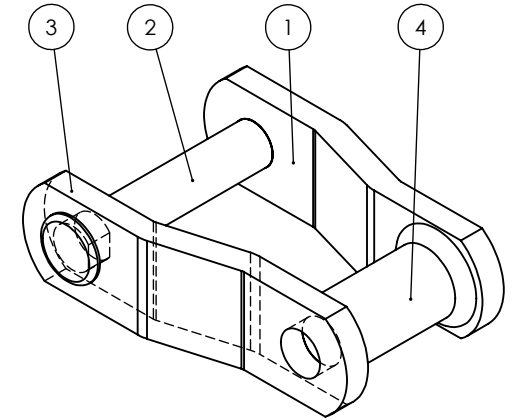
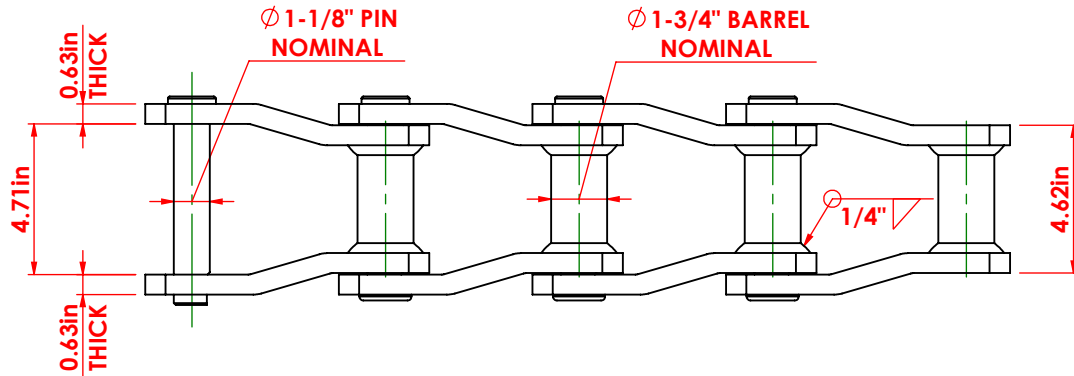
TITLE:
M315A-200 HVY CHAIN WITH ATTACHMENT EVERY 2ND OUTER SIDEBAR

DWG. NO. A-3996	REV 1
---------------------------	-----------------

SCALE: NTS

SHEET 1 OF 1

REVISIONS			
REV.	DESCRIPTION	BY:	DATE
1	ISSUED FOR INTERNAL REVIEW	HP	6/12/19
0	ISSUED FOR PRODUCTION	DC	7/3/2024



BUSHING: INDUCTION HARDENED HRC55-62
PIN: INDUCTION HARDENED HRC55-62
PLATE: THRU HARDENED HRC26-32

BOM TABLE PER LINK				
ITEM NO.	PART NUMBER	DESCRIPTION	Material	EST. WT.
1	SBR-3928-001	PLATE A ROUND HOLE	5140 ALLOY STEEL	3.52 lbs
2	WH157IBR 1_1-8 Pin	WH157 PIN	5140 ALLOY STEEL	1.90 lbs
3	SBR-3928-002	PLATE B FLAT HOLE	5140 ALLOY STEEL	3.53 lbs
4	BRL-3928-001	Ø 1 3/4" BUSHING	5140 ALLOY STEEL	1.31 lbs



PROPRIETARY AND CONFIDENTIAL

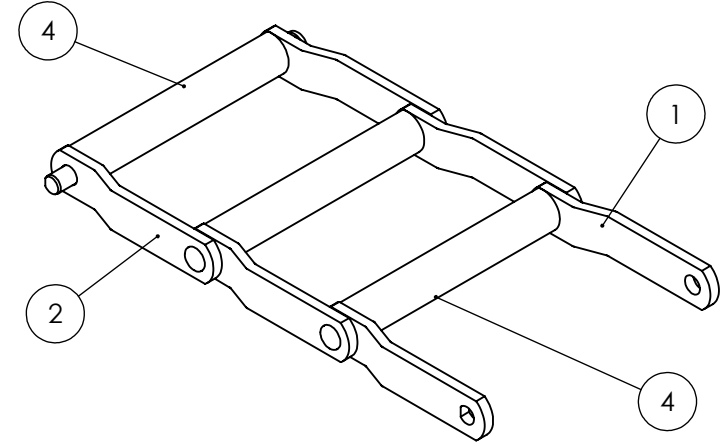
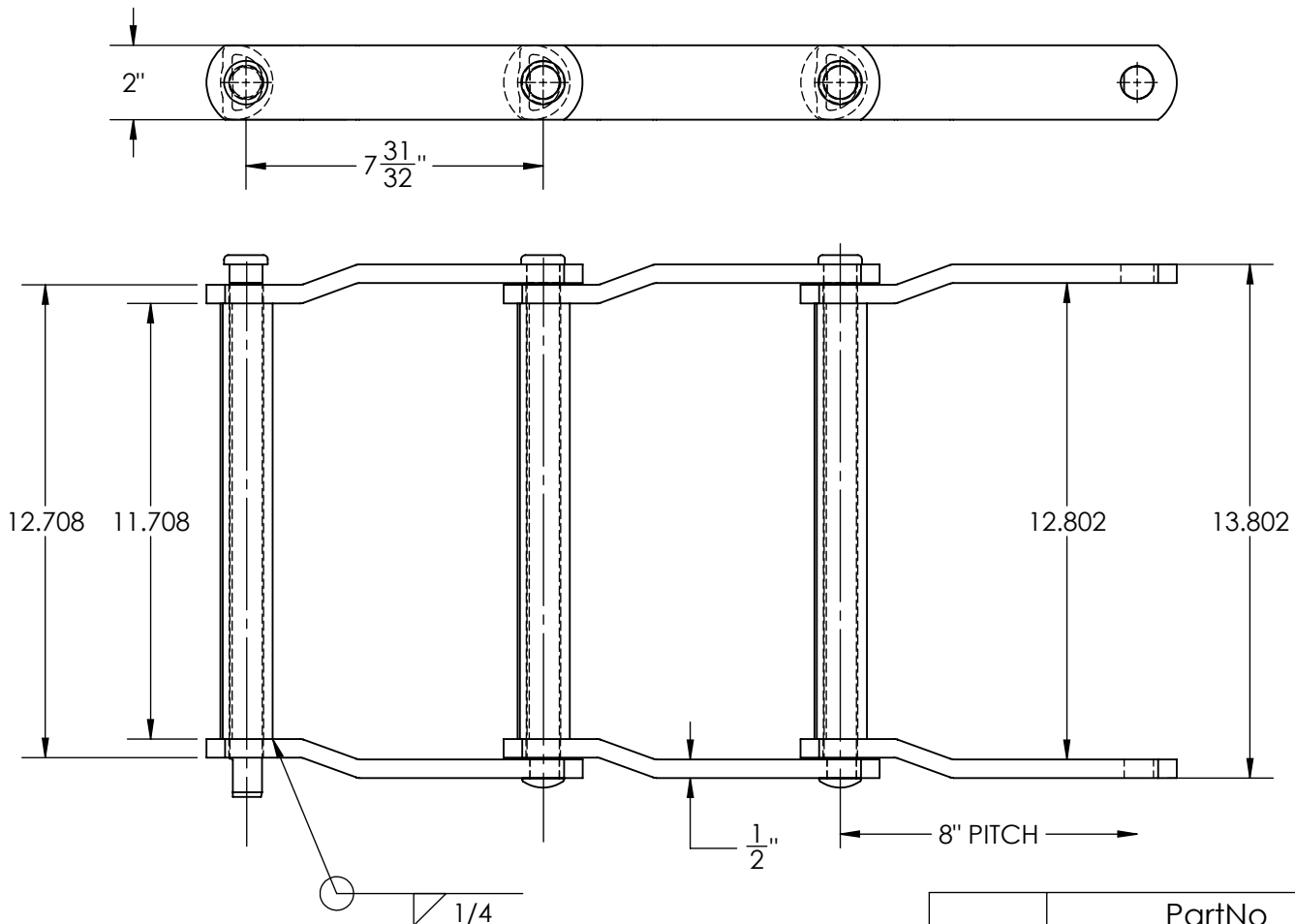
THE INFORMATION CONTAINED IN THIS DRAWING IS THE SOLE PROPERTY OF ADVANCED MATERIAL HANDLING. ANY REPRODUCTION IN PART OR AS A WHOLE WITHOUT THE WRITTEN PERMISSION OF ADVANCED MATERIAL HANDLING IS PROHIBITED.

UNLESS OTHERWISE SPECIFIED:	
DIMENSIONS ARE IN INCHES	
TOLERANCES: FRACTIONAL: ±1/16 ANGULAR: ±1° TWO PLACE DECIMAL: ±0.010 THREE PLACE DECIMAL: ±0.005	
SURFACE:	125/√
MATERIAL:	SEE BOM
PART#	20-0980

NAME	DATE
DRAWN HP	8/13/2021
CHECKED	
ENG APPR.	
MFG APPR.	
Q.A.	
COMMENTS:	

TITLE:		
WH157IBR CHAIN		
SIZE A	DWG. NO. A-3928	REV 0
SCALE: NTS	SHEET 1 OF 1	

REV.	DESCRIPTION	BY	DATE
1	ISSUED FOR PRODUCTION	AL	2015-02-02
2	PIN CHANGED TO RIVETED	VA	5/10/2024



	PartNo	DESCRIPTION	HARDNESS	Material
1	20-0083-01	ROUND SIDE BAR	HRC 25-39	40CR
2	20-0083-02	SQUARE SIDE BAR	HRC 25-39	40CR
3	20-0083-03	PIN	HRC 35-42	40CR
4	20-0083-04	BARREL	HRC 30-40	40CR



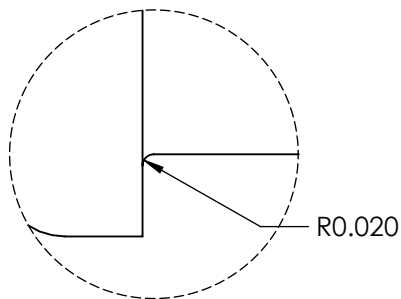
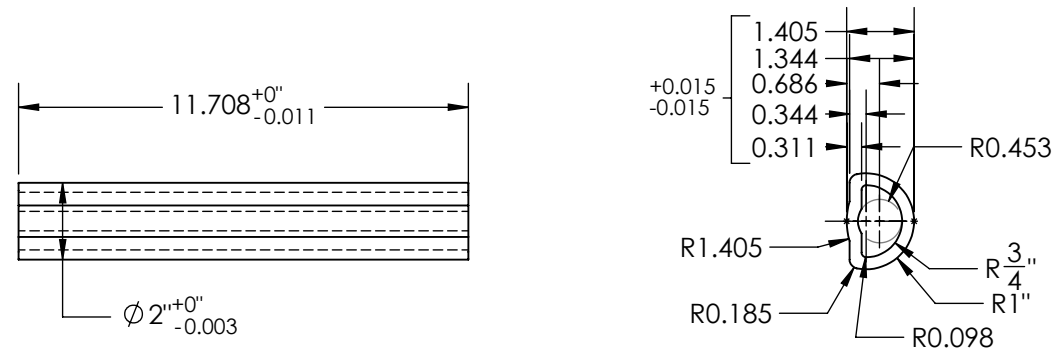
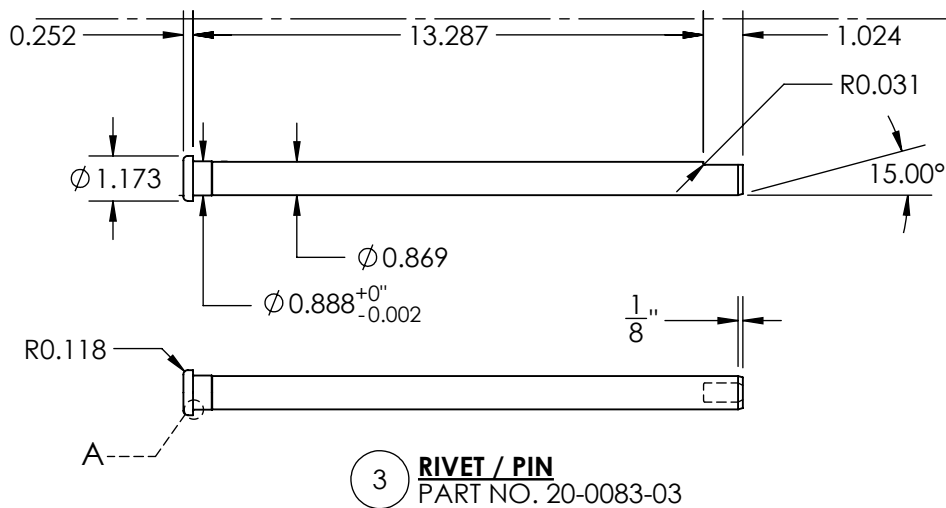
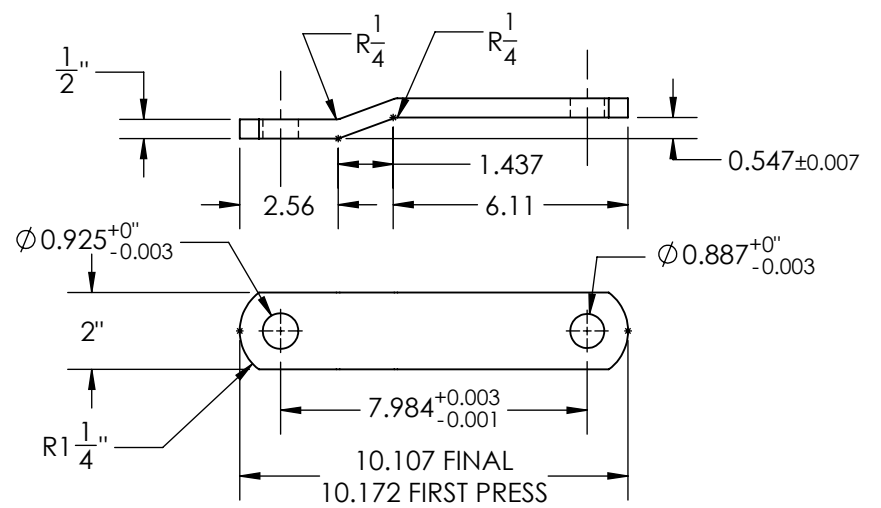
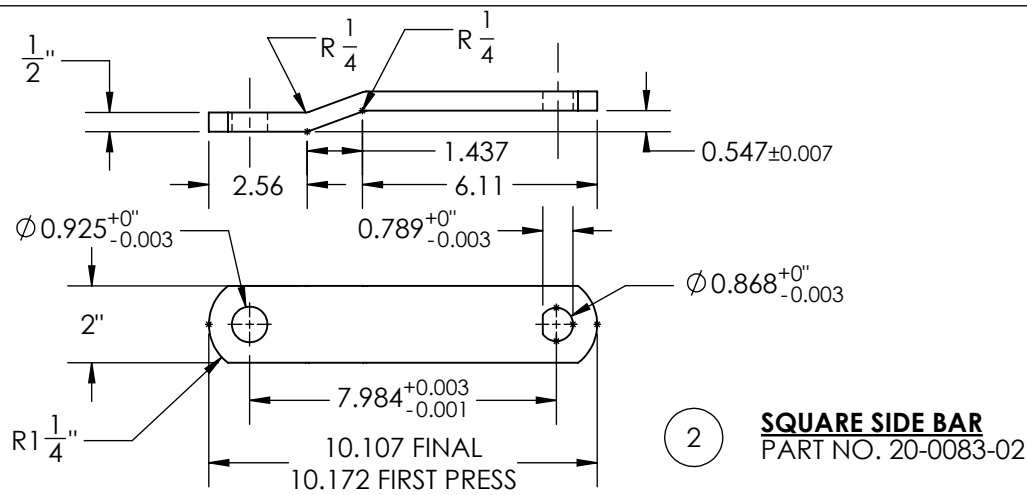
PROPRIETARY AND CONFIDENTIAL
 THE INFORMATION CONTAINED IN THIS DRAWING IS THE SOLE PROPERTY OF ADVANCED MATERIAL HANDLING. ANY REPRODUCTION IN PART OR AS A WHOLE WITHOUT THE WRITTEN PERMISSION OF ADVANCED MATERIAL HANDLING IS PROHIBITED.

UNLESS OTHERWISE SPECIFIED:
 DIMENSIONS ARE IN INCHES
 TOLERANCES:
 FRACTIONAL: $\pm 1/16$
 ANGULAR: $\pm 1^\circ$
 TWO PLACE DECIMAL: ± 0.010
 THREE PLACE DECIMAL: ± 0.005
 SURFACE: $\sqrt{125}$

PART# 20-0083

	NAME	DATE
DRAWN	ANDY LEE	FEB 2/15
CHECKED		
ENG APPR.		
MFG APPR.		
Q.A.		
COMMENTS:		

TITLE: WDH-480 WELDED CHAIN ASSEMBLY		
DWG. NO. A-1732	REV 2	
SCALE: NTS		SHEET 1 OF 2



PROPRIETARY AND CONFIDENTIAL
THE INFORMATION CONTAINED IN THIS DRAWING IS THE SOLE PROPERTY OF ADVANCED MATERIAL HANDLING. ANY REPRODUCTION IN PART OR AS A WHOLE WITHOUT THE WRITTEN PERMISSION OF ADVANCED MATERIAL HANDLING IS PROHIBITED.

UNLESS OTHERWISE SPECIFIED:	
DIMENSIONS ARE IN INCHES	
TOLERANCES:	
FRACTIONAL: ±1/16	
ANGULAR: ±1°	
TWO PLACE DECIMAL: ±0.010	
THREE PLACE DECIMAL: ±0.005	
SURFACE: $\sqrt{125}$	
PART#	20-0083

	NAME	DATE
DRAWN	ANDY LEE	FEB 2/15
CHECKED		
ENG APPR.		
MFG APPR.		
Q.A.		
COMMENTS:		

TITLE:		
WDH-480 WELDED CHAIN COMPONENTS		
DWG. NO.	REV	
A-1732	2	
SCALE: NTS	SHEET 2 OF 2	