



**HATECO**  
LOGISTICS



# HATECO LOGISTICS

## HATECO LOGISTICS JSC.

-  No 1 Huynh Tan Phat, Sai Dong B Industrial Zone, Long Bien, Hà Nội
-  024 7100 6686 | 0968 16 1616
-  [kinhdoanhhtl@hateco.com.vn](mailto:kinhdoanhhtl@hateco.com.vn)
-  [www.hatecologistics.vn](http://www.hatecologistics.vn)

**ALL IN ONE STOP**



## TABLE OF CONTENT



### **PART I.**

**Overview of  
Hateco Logistics**



### **PART II.**

**Hateco Logistics'  
services**



### **PART III.**

**Partnership activities**



# PART I. HATECO LOGISTICS



# ABOUT US

[HTTPS://HATECOLOGISTICS.VN/](https://hatecologistics.vn/)

**Hateco Logistics Joint Stock Company is a member of Hateco Group. Here, we own the largest logistics center in the North, strategically located at the gateway of Hanoi capital. Hateco Logistics is proud to be the first place to integrate the logistics center with inland container depot (ICD), which brings outstanding added values to customers.**

Hateco Logistics provides a full chain of customs clearance services for import and export goods, e-commerce goods, express delivery, domestic and international freight forwarding services, warehousing, distribution services, commercial services, import and export, research and connect customers, markets...We provide warehouse infrastructure for the world's leading e-commerce and express companies such as: UPS Express, DHL Express, Lazada, Shopee,...With a strategic vision of "go ahead and take the lead", Hateco Group has been implementing large projects such as: building deep-water port number 5&6 in Lach Huyen, Hai Phong and Bac Tien Phong industrial zone, Quang Ninh, etc creating competitive advantages for Hateco Logistics to fulfill our logistics service chain ecosystem.



**ICD LONG BIEN**



**BONDED WAREHOUSE**



**CFS WAREHOUSE**



**DISTRIBUTION CENTER**



**OFF-AIRPORT TERMINAL**

# CORE VALUES

## 01 PRESTIGE

Constantly striving to create and preserve the reputation, thereby creating customers and partners' trusts



## 02 DEDICATION

Focus on customers, always dedicated to the customers

## 03 RESPONSIBILITIES

Responsibilities are assigned to each individual and company's employees

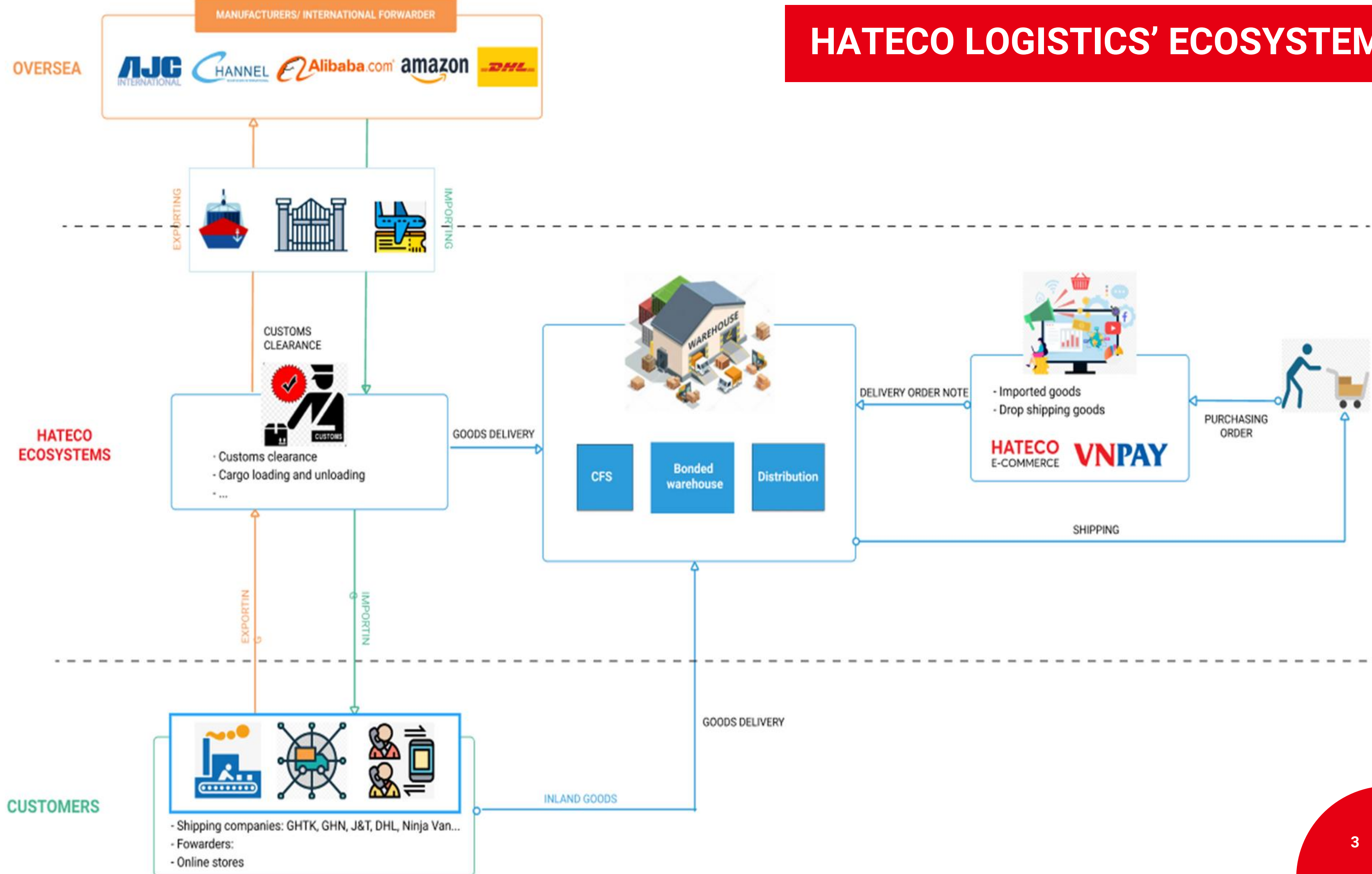


## EFFICIENCY 04

Provide customers best services with the most competitive price

## PIONEER 05

Always take the lead and constantly break through



# SUPPORTING SERVICES FROM HATECO GROUP



01

## REAL ESTATE (RESIDENTIAL & INDUSTRIAL)

With more than 15 years of developing and investing in real estate, Hateco Group has 6 urban areas and **apartment building projects** in Hà Nội and surrounding provinces; Bac Tien Phong **Industrial Park** in Quang Ninh.

02

## SEA PORTS

Terminals (Berths) No. 5 and No. 6 in Lach Huyen – Hai Phong City and Cai Mep Ha Logistics Center – Ba Ria Vung Tau Province



**HATECO**  
LOGISTICS



**PART II.**  
**HATECO LOGISTICS'**  
**SERVICES**

## STRATEGIC PARTNERS



## HATECO LOGISTICS SERVICES



01

Long Bien Inland Container Depot (ICD)



02

Freight forwarding



03

Warehousing



04

Import/export customs clearance



05

International ocean/air freight booking agent



06

Logistics services for supply chain system 3PL



07

Customs clearance of express, postal & e-com parcels



08

Customs supervision agent



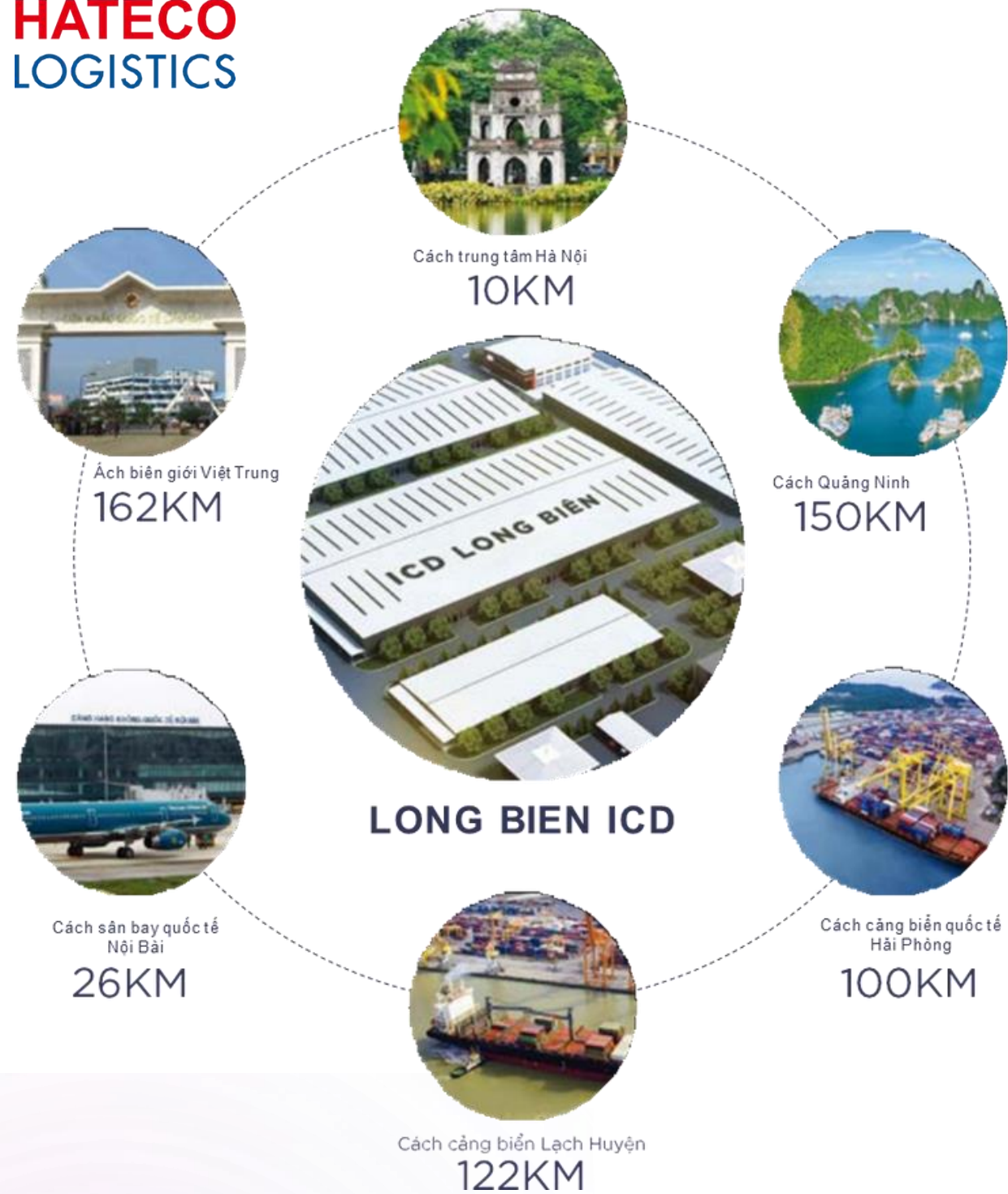
09

Cross-border services



10

Trading - Import/Export



Long Bien Inland Container Depot (ICD Long Bien) officially came into operation in 2020, which is the extended arm of seaports, airports, border gates, roads to major economic hubs in the North



Advantages in port location and comprehensive service package ensure to fulfill perfectly transportation needs of shipping lines, 2PL/ 3PL freight forwarding companies, import-export companies, and trading service companies



- Area: 12 ha (120,000 sqm)
- Port code: VNILB
- Customs clearance capacity: 135,000 TEU /year
- Operation time: 24/7
- Location: No. 1 Huynh Tan Phat, Sai Dong B Industrial Park, Long Bien, Hanoi.



# 1. Long Bien Inland Container Depot (ICD)



# SERVICES AT ICD LONG BIEN

**1.1**



## **Forwarding at destination port**

Long Bien ICD is recognized by the Ministry of Finance as an authorized domestic location to carry out customs clearance for imported/exported goods, providing forwarding services for destination ports

**1.2**



## **Load, unload containers of import and export goods at container yards**

Import and export goods are loaded, unloaded at the yard and transferred to trucks at the shipper's request.

**1.3**



## **Transfers of bulk cargos, Less than container load (LCL), Full container load (FCL)**

Load and unload containers at the carrier's request

**1.4**



## **Packing, splitting and labeling import and export goods**

Import and export goods are splitted, packed and labeled by Hateco Logistics at the owner's request.

**1.5**



## **Customs inspection support**

Hateco Logistics provides inspection support services including lift off containers for cargo inspection, seal remove, forklifts for inspection, sampling, and new seal plier.

**1.6**



## **Imported and domestic car yard**

Hateco Logistics has 2 car parks with a capacity of more than 800 imported vehicles & domestic vehicles. We provide safe vehicle storage and satisfy a wide range of customer services requirements.

## 2. FREIGHT FORWARDING SERVICES

 Ocean freight

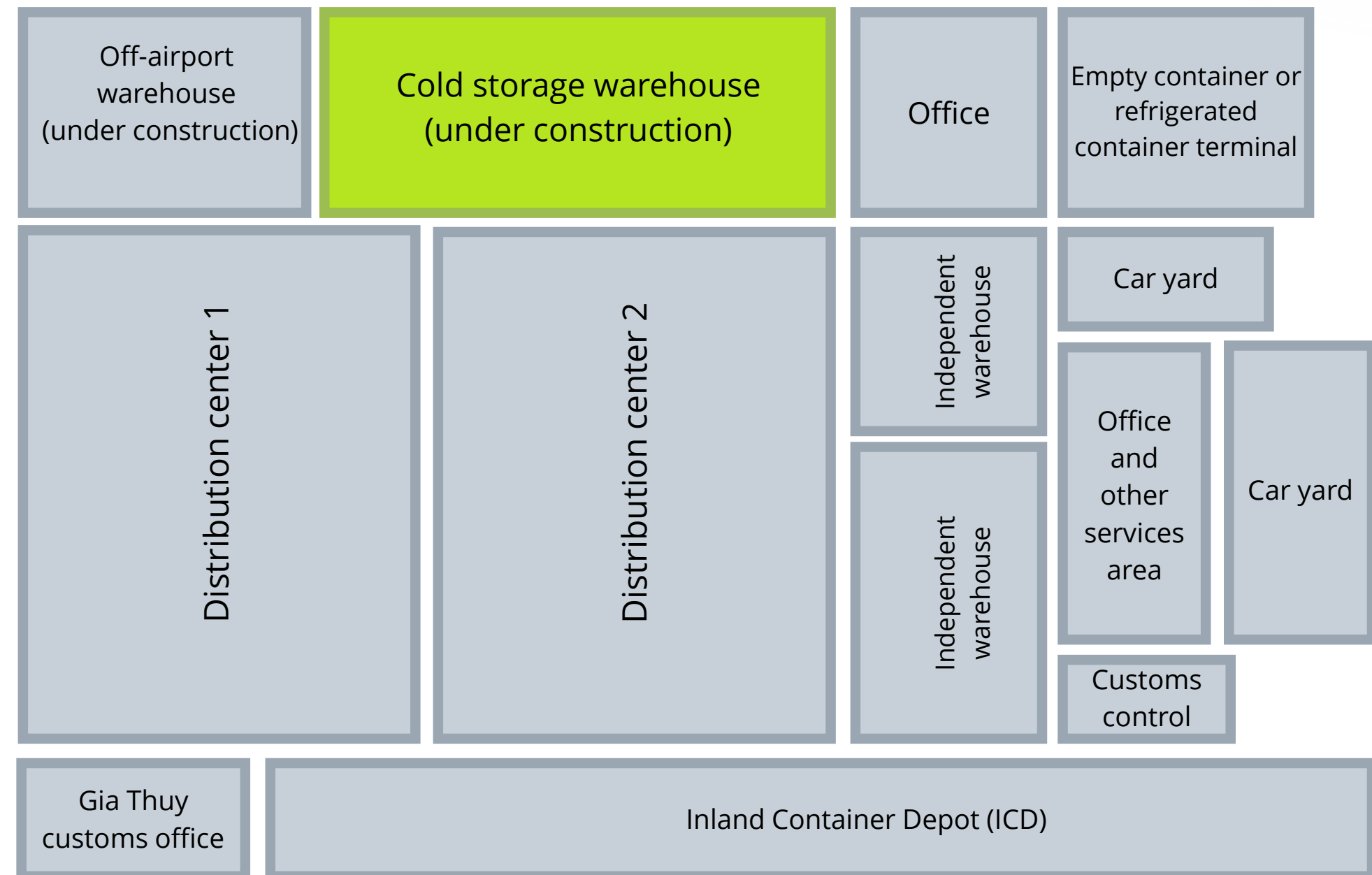
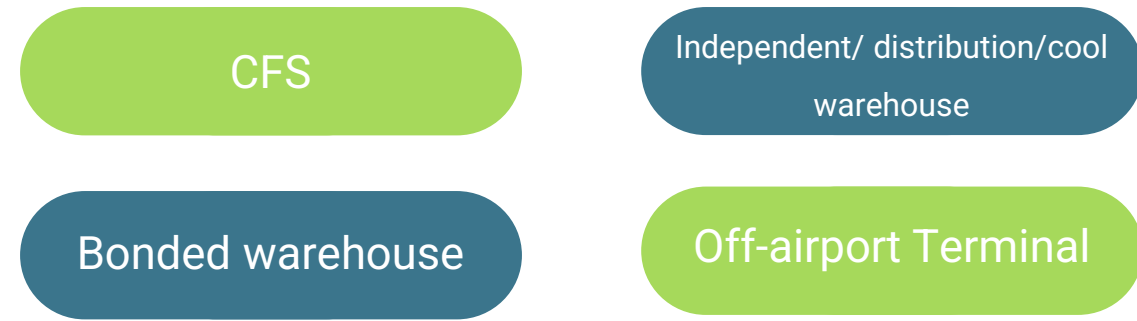
 Road freight

 Railway freight

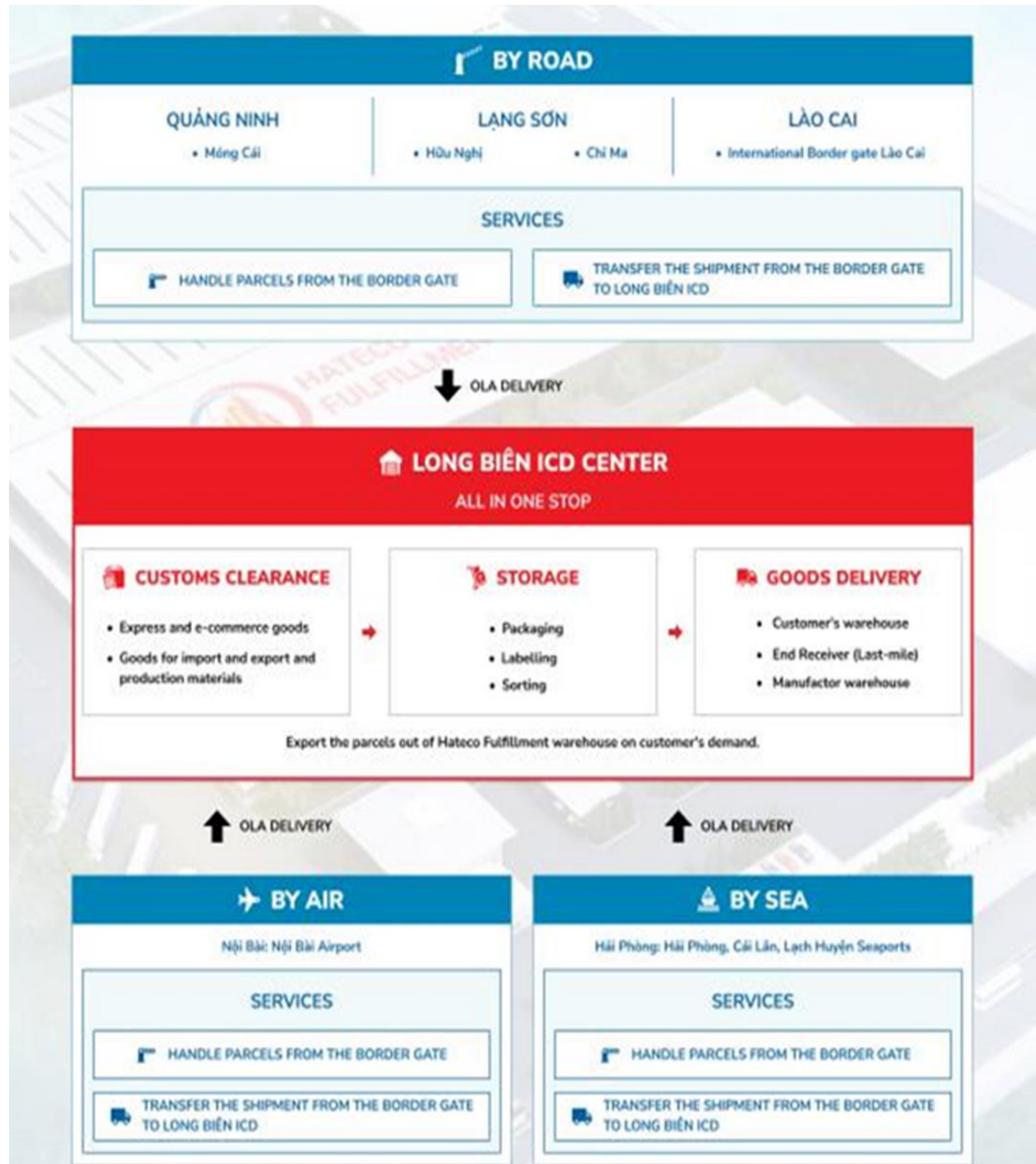
 Air freight



## 3. WAREHOUSING



# 4. CUSTOMS CLEARANCE FOR IMPORTED AND EXPORTED GOODS



## 5. INTERNATIONAL OCEAN/AIR FREIGHT BOOKING AGENT

- ▶ Scheduling departure/arrival date, booking, tracking, until delivery.
- ▶ Minimize the international transport costs
- ▶ Support customers, focus on businesses and sales targets.



## 6. LOGISTICS SERVICES FOR SUPPLY CHAIN SYSTEM (3PL)

With the motto "Best to support customers to gain competitive adquality with the best cost", Hateco Logistics always wants vantages, focusing resources for their core business.





## 7. CUSTOMS CLEARANCE OF EXPRESS, POSTAL E-COM PARCELS



- Total area of customs clearance site is 5.000 sqm
- Clearance capacity is up to 500,000 parcels/day.
- Separate import and export flows
- Providing bonded warehouse service



## 8. CUSTOMS SUPERVISION AGENCY



- Responsible for road transport activities, road transport vehicles, and goods transported within Vietnam.
- Confirm information declared by the declarer
- Report to the customs office



## 9. CROSS-BORDER FREIGHT FORWARDING



- Hateco Logistics is a hub for customs clearance, trans-shipment and development of cross-border freight services through China, Laos, Thailand, Cambodia. Chinese vehicles depot at ICD Long Bien allows Chinese vehicles go straight from the Vietnam-China border to Long Bien ICD, executing transit and clearance procedures at ICD Long Bien.
- Besides, LCL, FCL freight services with Incoterms shipping conditions

01

## MARKET RESEARCH

- ☛ Conduct market research for products due to customers' request
- ☛ Analyze potential products in each country

02

## CONNECT IMPORT - EXPORT MARKETS

Search and connect market - customers; brokers, commercial intermediaries and directly import and export goods from Vietnam to foreign markets and vice versa.

03

## IMPORT-EXPORT CONSULTING & SERVICES

- ☛ International sales contracts;
- ☛ International payments, bank guarantees;
- ☛ International cargo transportation procedures, C/O application procedures, handling of disputes related to lack of goods/damaged goods/low-quality goods;
- ☛ Procedure for application of the list of imported machinery and equipment for tax-exempt fixed assets creation, application for the synchronous equipment line certificate for investment projects, import and export clearance procedures, customs consultation procedures.
- ☛ Entrusted Import-Export

# 10. TRADING - IMPORT/EXPORT

## Main markets

- ▶ EU
- ▶ North America
- ▶ Asia

1. Decision 3122/QD-TCHQ on accreditation of Customs Broker, dated 17/10/2018
2. Official letter of recognition of Hateco Logistics Center at No. 1 Huynh Tan Phat, Thach Bàn ward, Long Bien district, Hanoi city No. 9504/BCT-TTTN, dated 21/11/2018
3. Postal Service License No454/GP-BTTTT, dated 28/12/2018 & Confirmation of Postal Activities No 4351/XN-BTTTT, dated 24/12/2018
4. Decision 3716/QD-TCHQ on the recognition of bonded warehouses, dated 25/12/2018
5. Decision 3717/QD-TCHQ on the recognition of Container Freight Station (CFS), dated 25/12/2018
6. Decision 711/QĐ-BGTVT on Opening Long Bien Inland Container Depot, dated 20/04/2020 & Decision 2671/QD-TCHQ on the recognition of Customs Supervision Agent, dated 19/09/2019
7. International multimodal transport Operator license No.19-25/GP-BGTVT, dated 19/11/2019
8. Decision 769/QD-BTC on recognition of customs clearance locations of exported and imported goods established at Long Bien Inland Container Depot, dated 25/05/2020
9. Decision 1189/QD-TCHQ on recognition for collection, inspection and centralized supervision of postal and express goods, dated 29/04/2021
10. Liquor distribution license No. 06/GP-BCT, dated 05/01/2022



**PART III.  
PARTNERSHIP  
ACTIVITIES &  
SUPPORTING SERVICES  
FROM HATECO GROUP**

# PARTNERSHIP ACTIVITIES AT HATECO LOGISTICS



▶▶ Signing ceremony of strategic partnership between Hateco with Besix (Kingdom of Belgium)

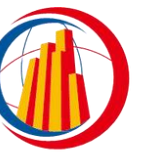
▶▶ Signing ceremony of cooperation agreement with “Rent A Port” in Belgium for Seaport Development project (bulk cargo) and Inland waterway port in Hai Phong, witnessed by Mr. Nguyen Xuan Phuc, Prime Minister of Vietnam and Mr. Charles Michel, Prime Minister of Belgium.



▶▶ A signing cooperation ceremony between HATECO and DHL Express



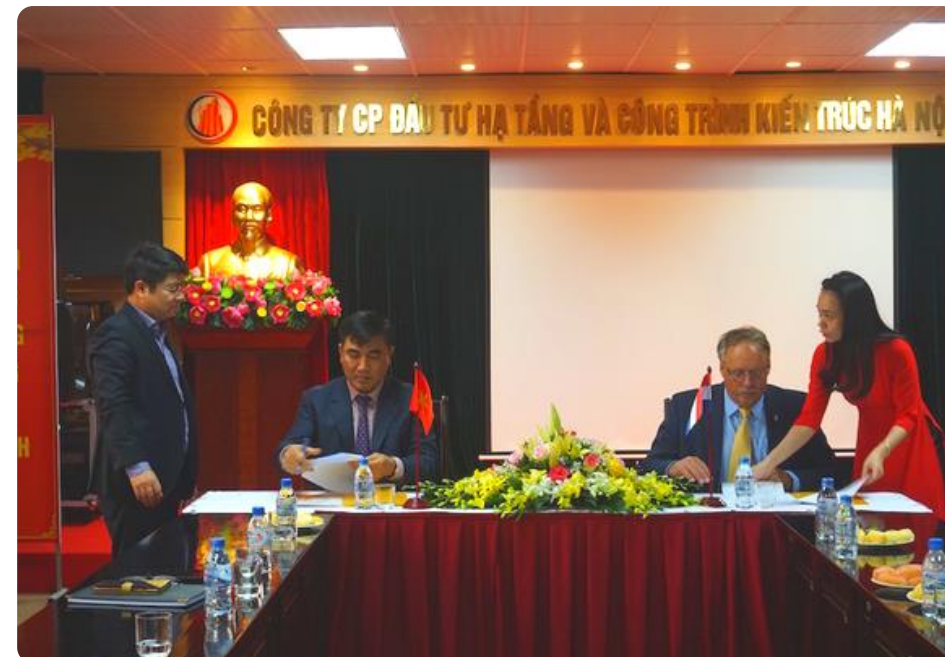
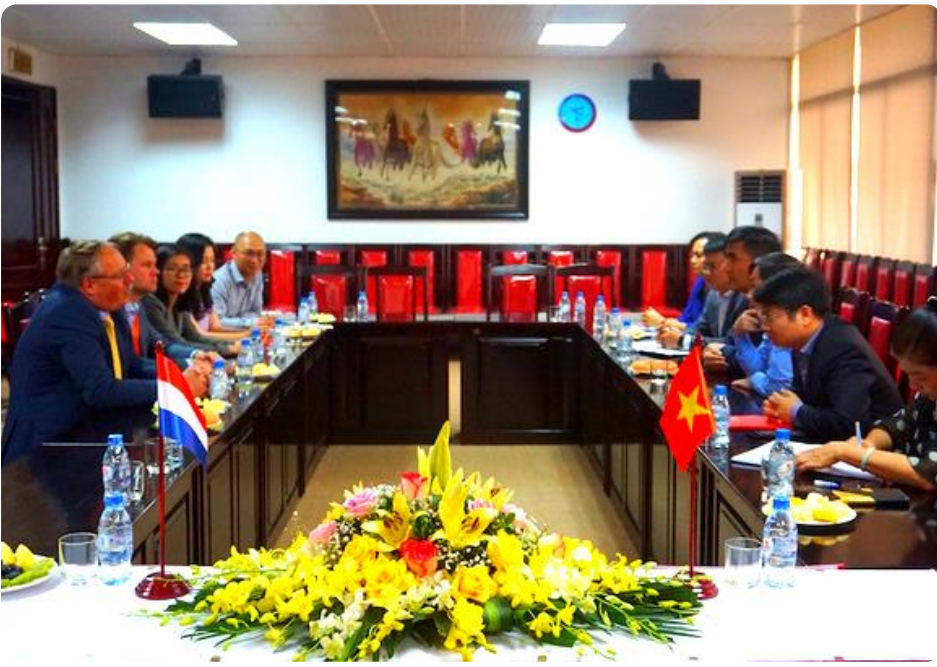
▶▶ On Dec 7th, 2018 DHL Express has opened the Eastern Exploitation Center in HATECO Logistics Hub with total area of 5.800sqm and total investment of 143 billion VND (equivalent to 6.3 million USD).



**HATECO**  
LOGISTICS

## Project “Cai Mep Ha Smart Logistics Hub in Ba Ria - Vung Tau province”

Hateco - Besix - Boskalis signed Memorandum of Understanding (MOU), regarding Cai Mep Ha Smart Logistics Hub in Ba Ria - Vung Tau province



# JOINING PRESTIGIOUS ASSOCIATIONS

01

VIETNAM  
LOGISTICS  
ASSOCIATION (VLA)

03

SHENZHEN CROSS  
BORDER E-COMMERCE  
ASSOCIATION

02

JCTRANS LOGISTICS  
NETWORK




**HATECO**  
LOGISTICS

*thank  
you*

**HATECO LOGISTICS JSC.**

 No 1 Huynh Tan Phat, Sai Dong B Industrial Zone, Long Bien, Hà Nội

 024 7100 6686 | 0968 16 1616

 [kinhdoanhhtl@hateco.com.vn](mailto:kinhdoanhhtl@hateco.com.vn)

 [www.hatecologistics.vn](http://www.hatecologistics.vn)

